

S-100-STN



Ice Maker® Ball Valve

ISO EN 9001:2000

Description

1/4 turn, lever operated, hot forged brass ball valve. 100% full port. Blow-out proof two-piece design. Made in Italy. 100% tested.

Features

- Pressure rating: 125 WOG
- Double Viton® O-rings
- Replaces non-code saddle valves
- Forged brass body
- 100% full port
- 1/4" side tap
- Hard C.P. brass ball

Accessories

- "Lift-N-Lock" locking device
- 2" Handle extension
- Lever and Round 304 stainless steel handles
- "Slo-Ball" Handle (for metering under high pressures)
- Red Painted Aluminum "T" Handle
- Pneumatic & Electric Actuation Available upon request

Warranty

The Company, for a period of one year from the date of shipment, warrants each product or system of its own manufacture to the original purchaser to be free from defects in material and workmanship under normal use, service and maintenance.



S-100-STN

Architect/Engineer approval

Job Name _____ Date _____
Model Specified _____ Quantity _____
Variations Specified _____
Customer/Wholesaler _____
Contractor _____
Architect _____

Note: Information subject to change without notice.



Jomar International Ltd.
7243 Miller Drive
Warren, MI 48092
Phone: 800-325-5690
Fax: 800-628-4194
www.jomar.com

© Copyright 2006 Printed in U.S.A.
S-100-STN
0406

S-100-STN

Ice Maker® Ball Valve



Description

1/4 turn, lever operated, hot forged brass ball valve. 100% full port. Blow-out proof two-piece design. Made in Italy. 100% tested.

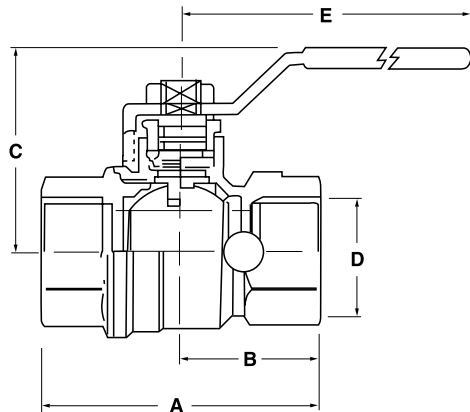
Dimensions In Inches

| Computer Number | Valve Size | A | B | D | C | E | F | CV† |
|-----------------|------------|------|------|------|------|------|------|-------|
| 100-823 | 1/2" | 2.48 | 1.53 | 0.59 | .53 | 2.95 | 1.24 | 20.25 |
| 100-824 | 3/4" | 3.26 | 1.88 | 0.79 | .88 | 3.74 | 1.49 | 41.83 |
| 100-825 | 1" | 3.93 | 2.36 | 1.00 | 2.36 | 4.72 | 1.97 | 78.38 |

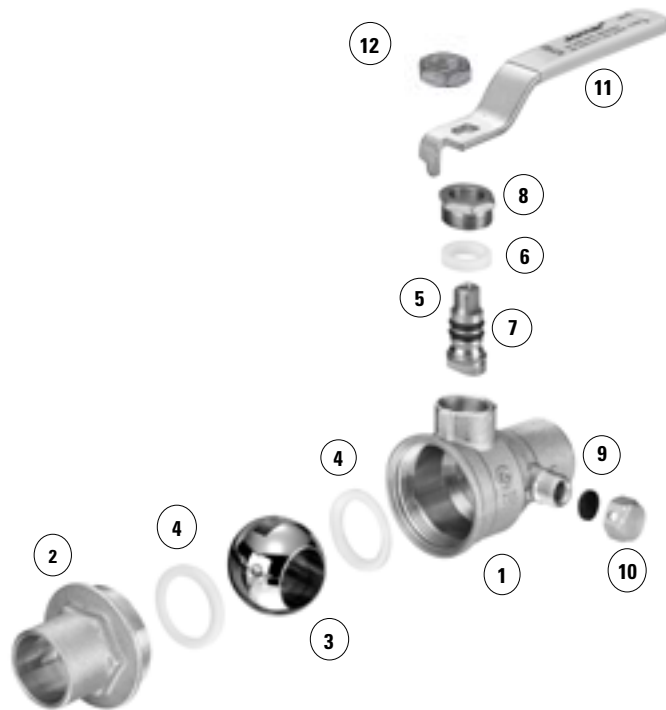
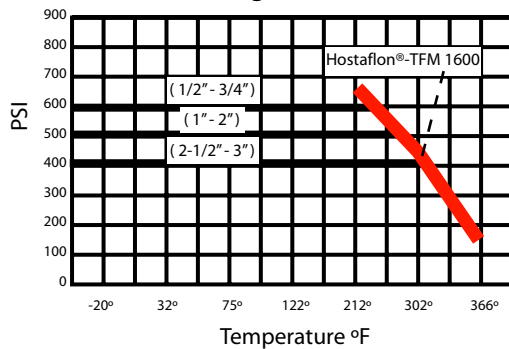
† The CV Factor is the gallons of water per minute passed through the valve with 1 PSI pressure drop.

Material Specification

| No. | Part Name | Materials |
|-----|------------------|-----------------------|
| 1 | Body | Hot Forged Brass |
| 2 | End Adapter | Hot Forged Brass |
| 3 | Ball | Hard C.P. Brass |
| 4 | Seat (2) | Hostaflon®- TFM 1600 |
| 5 | Stem | Extruded Brass |
| 6 | Stem Packing | Hostaflon®- TFM 1600 |
| 7 | Stem O-Rings (2) | Viton® |
| 8 | Packing Gland | Extruded Brass |
| 9 | Flat Washer | BUNA-N |
| 10 | Cap | Extruded Brass |
| 11 | Lever handle | Plastic coated steel |
| 12 | Handle Nut | Dacromet Coated Steel |



Valve Seat Rating



Note: Information subject to change without notice.



Jomar International Ltd.
7243 Miller Drive
Warren, MI 48092
Phone: 800-325-5690
Fax: 800-628-4194
www.jomar.com

© Copyright 2006 Printed in U.S.A.
S-100-STN
0406