



## The Muffler® Pneumatic Automatic Drain Valve

ISO EN 9001:2000



**T-100P-SS-WS**  
(shown without cone  
style muffer)

### Description

1/4 turn lever handle operated, hot forged brass, 100% full port, blowout proof stem and 2-piece body design with automatic drain ball valve for air applications.

### Features

- Quiet operation
- Meets/exceeds **OSHA 1910.95** for noise attenuation and air dispersal.
- 100% full port
- Raised boss to accept NPT threaded muffer
- Automatic downstream venting in closed position
- Reduces compressed air noise to OSHA levels
- Lift-n-Lock system satisfies OSHA 1910.147
- Nickel-plated forged brass body
- Double Viton® O-rings prevent stem leakage
- Pressure rating: 600/500 WOG / 150 WSP
- Temperature range: -40°F to +300°F
- NPT connections

### Approvals

- Meets/exceeds **OSHA 1910.95** for noise attenuation and air dispersal.

### Accessories

- Master Lock available
- Cone muffer accessory
- Flat muffer accessory

### Warranty

The Company, for a period of one year from the date of shipment, warrants each product or system of its own manufacture to the original purchaser to be free from defects in material and workmanship under normal use, service and maintenance.

#### Architect/Engineer approval

Job Name \_\_\_\_\_ Date \_\_\_\_\_  
Model Specified \_\_\_\_\_ Quantity \_\_\_\_\_  
Variations Specified \_\_\_\_\_  
Customer/Wholesaler \_\_\_\_\_  
Contractor \_\_\_\_\_  
Architect \_\_\_\_\_

Note: Information subject to change without notice.



Jomar International Ltd.  
7243 Miller Drive  
Warren, MI 48092  
Phone: 800-325-5690  
Fax: 800-628-4194  
www.jomar.com

# T-100P-SS-WS

## The Muffler® Pneumatic Automatic Drain Valve



### Description

1/4 turn lever handle operated, hot forged brass, 100% full port, blowout proof stem and 2-piece body design with automatic drain ball valve for air applications.

### Dimensions in Inches

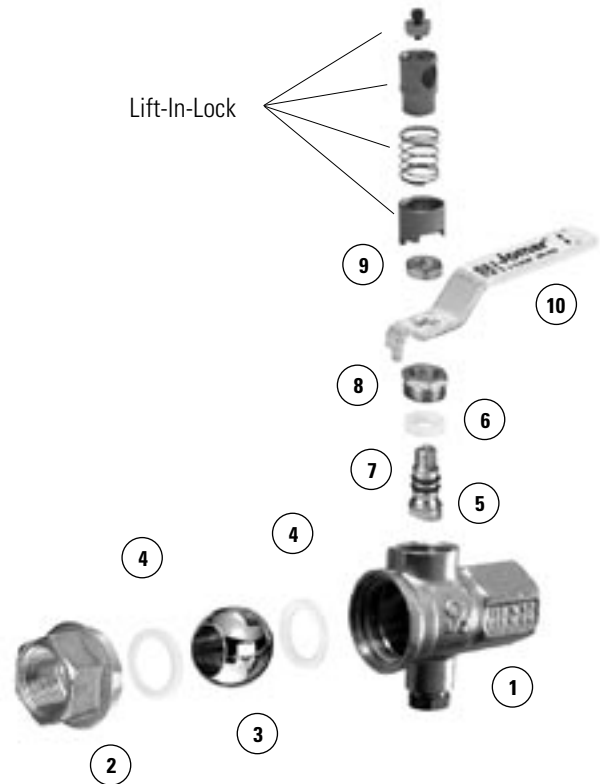
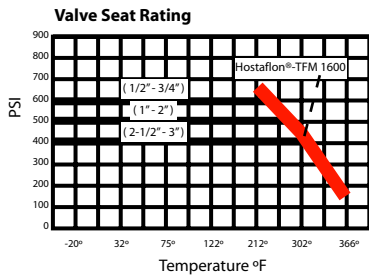
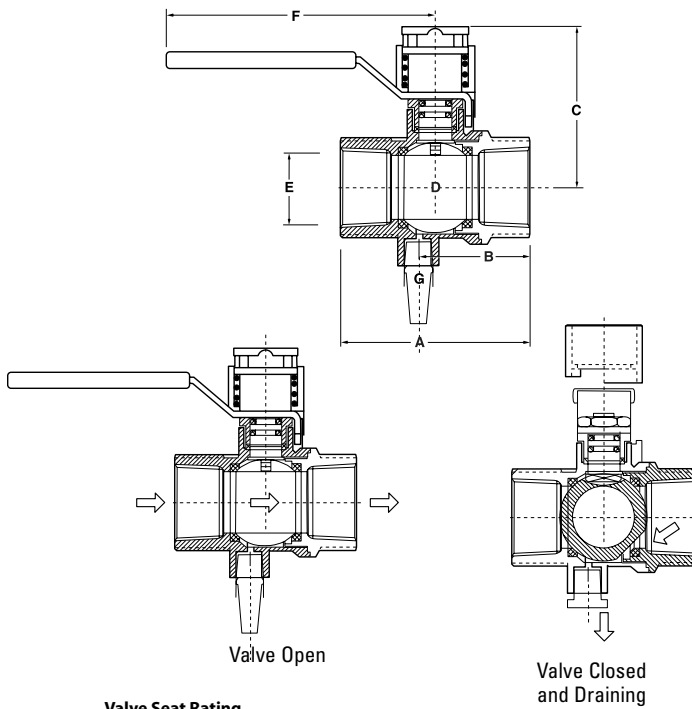
Computer No.	Valve Size	A	B	C	D	NPT E	F	NPT G
100-923	1/2"	2.44	1.22	1.53	.59	.50	2.95	.125
100-924	3/4"	2.71	1.36	1.88	.79	.75	3.74	.125
100-925	1"	3.30	1.65	2.36	1.00	1.00	4.72	.125

### Material Specifications

No.	Part Name	Materials
1	Body	Hot Forged Brass
2	End Adapter	Hot Forged Brass
3	Ball	316 Stainless Steel
4	Seat (2)	PTFE
5	Stem	316 Stainless Steel
6	Stem Packing	PTFE
7	O-Rings (2)	Viton®
8	Follower Gland	Extruded Brass
9	Handle Nut	Dacromet Coated Steel
10	Lever Handle	Dacromet Coated Steel

### Pressure Rating

1/2" - 3/4"	600 lbs. W.O.G.
1"	500 lbs. W.O.G.



Note: Information subject to change without notice.



Jomar International Ltd.  
7243 Miller Drive  
Warren, MI 48092  
Phone: 800-325-5690  
Fax: 800-628-4194  
www.jomar.com

© Copyright 2006 Printed in U.S.A.  
T-100P-SS-WS  
0406