



PVC In-Line Check Valves

Description

In-line, stainless steel spring loaded, poppet style, with resilient EPDM seat, PVC body check valve.

Features

- Pressure rating: 150 PSI at 73°F. Maximum service temperature: 140°F.
- Installs horizontally or vertically
- Schedule 40 PVC material
- Stainless steel spring-loaded PVC poppet
- Resilient EPDM seat
- NPT on socket weld
- IPS and socket ends
- Spring activates at .5 PSI

Warranty

The Company, for a period of one year from the date of shipment, warrants each product or system of its own manufacture to the original purchaser to be free from defects in material and workmanship under normal use, service and maintenance.



T-711



S-711

Architect/Engineer approval

Job Name _____ Date _____
Model Specified _____ Quantity _____
Variations Specified _____
Customer/Wholesaler _____
Contractor _____
Architect _____

NOT FOR USE ON COMPRESSED AIR

Note: Information subject to change without notice.



Jomar International Ltd.
7243 Miller Drive
Warren, MI 48092
Phone: 800-325-5690
Fax: 800-628-4194
www.jomar.com

PVC In-Line Check Valves

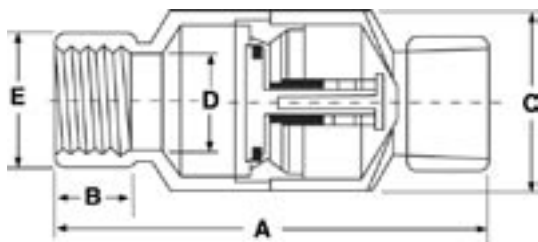


Description

In-line, stainless steel spring loaded, poppet style, with resilient EPDM seat, PVC body check valve.

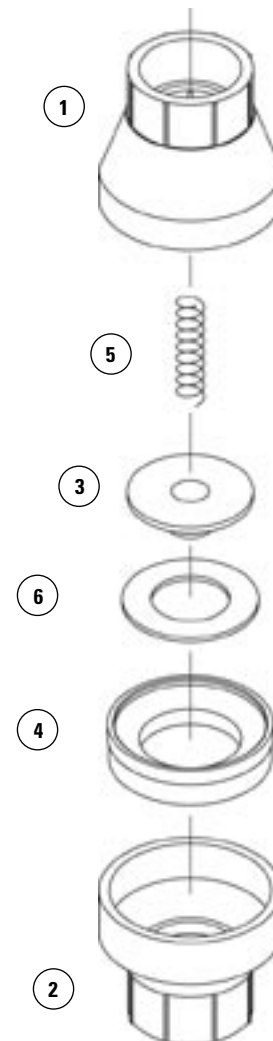
Dimensions in Inches

Computer No.	Valve Size	A	B	C	D	E
T-711 NPT						
210-303	1/2"	4.064	0.875	1.724	0.724	1.259
210-304	3/4"	4.094	1.000	1.724	0.913	1.370
210-305	1"	5.500	1.124	2.271	1.015	1.814
210-306	1-1/4"	6.307	1.250	2.731	1.480	2.047
210-307	1-1/2"	7.063	1.374	3.133	1.622	2.340
210-308	2"	8.207	1.500	3.514	2.000	2.885
S-711 Solvent Weld						
210-323	1/2"	4.064	0.875	1.724	0.724	1.259
210-324	3/4"	4.094	1.000	1.724	0.913	1.370
210-325	1"	5.500	1.124	2.271	1.015	1.814
210-326	1-1/4"	6.307	1.250	2.731	1.480	2.047
210-327	1-1/2"	7.063	1.374	3.133	1.622	2.340
210-328	2"	8.207	1.500	3.514	2.000	2.885



Material Specification

No.	Part Name	Material
1	Upper Body	PVC
2	Lower Body	PVC
3	Poppet	PVC
4	Seat	EPDM
5	Spring	304 Stainless Steel
6	Cup	PVC



Note: Information subject to change without notice.