

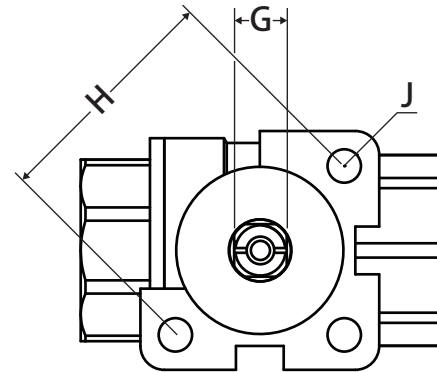
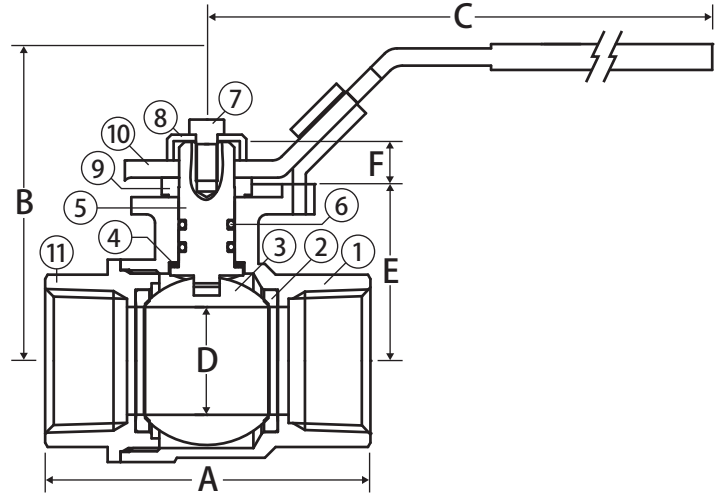
# Direct Mount Ball Valve



**2 Piece • Full Port • Threaded Connection • 600 WOG • ISO Mounting Pad • Stainless Steel Ball and Stem**



**A101**



## Features

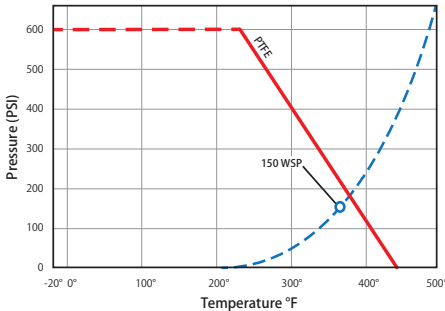
- Dezincification resistant alloy
- ISO 5211 direct mounting pad
- Square valve stem for direct mounting to any ISO actuator
- Blow out proof stem
- Latch lock may be locked in open or closed position
- 100% leak tested
- Wetted surface contains less than .25% lead content

## Approvals



- NSF 61-8
- NSF 372
- MSS SP-110
- ANSI B1.20.1

## Valve Seat Rating 600 WOG - 150 WSP



## Material Specifications

| No. | Part           | Materials                    |
|-----|----------------|------------------------------|
| 1   | Body           | Lead Free Brass - C46500     |
| 2   | Seat (2)       | PTFE                         |
| 3   | Ball           | 304 Stainless Steel          |
| 4   | Stem Seat      | PTFE                         |
| 5   | Stem           | 304 Stainless Steel          |
| 6   | O-ring (2)     | Viton®                       |
| 7   | Screw          | Nickel Plated Steel          |
| 8   | Packing Nut    | Nickel Plated Brass - C37700 |
| 9   | Gasket         | Nylon                        |
| 10  | Handle         | Chrome Plated Steel          |
| 11  | End Connection | Lead Free Brass              |

## Dimensions

| Part No. | Size   | A    | B    | C    | D    | E    | F    | G    | H    | J    | ISO | Torque |
|----------|--------|------|------|------|------|------|------|------|------|------|-----|--------|
| A101-12  | 1/2"   | 2.39 | 2.34 | 4.76 | 0.59 | 1.14 | 0.37 | 0.35 | 1.42 | 0.23 | F03 | 16     |
| A101-34  | 3/4"   | 2.57 | 2.48 | 4.76 | 0.75 | 1.28 | 0.37 | 0.35 | 1.42 | 0.23 | F03 | 23     |
| A101-1   | 1"     | 2.97 | 2.85 | 6.73 | 0.98 | 1.59 | 0.39 | 0.43 | 1.97 | 0.28 | F05 | 36     |
| A101-114 | 1-1/4" | 3.44 | 3.15 | 6.73 | 1.26 | 1.82 | 0.39 | 0.43 | 1.97 | 0.28 | F05 | 73     |
| A101-112 | 1-1/2" | 3.88 | 3.64 | 6.73 | 1.57 | 2.32 | 0.43 | 0.43 | 1.97 | 0.28 | F05 | 76     |
| A101-2   | 2"     | 4.29 | 3.94 | 6.73 | 1.94 | 2.62 | 0.43 | 0.43 | 1.97 | 0.28 | F05 | 130    |

Note: Torque is in (in-lb)