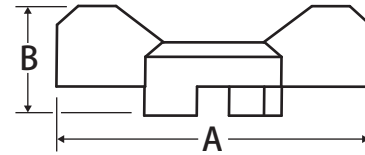


T-Handle

Compatible with JF Series



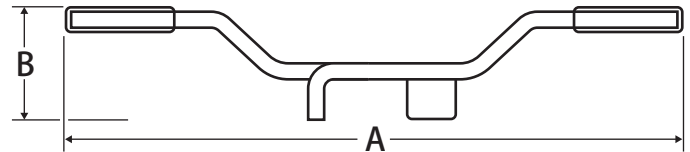
899-123 and 899-125



899-123 and 899-125



899-128



899-128

Material Specifications

Part	Materials
899-123	Powder Coated Aluminum
899-125	Powder Coated Aluminum
899-128	Stamped Steel

Dimensions

Part No.	Size	T/S-422G Size	A	B
899-123	1/4" - 1/2"	1/2" - 3/4"	2.125	0.850
899-125	3/4", 1"	1, 1-1/4"	2.6105	0.955
899-128	1-1/4" - 2"	1-1/2", 2"	6.1115	1.175