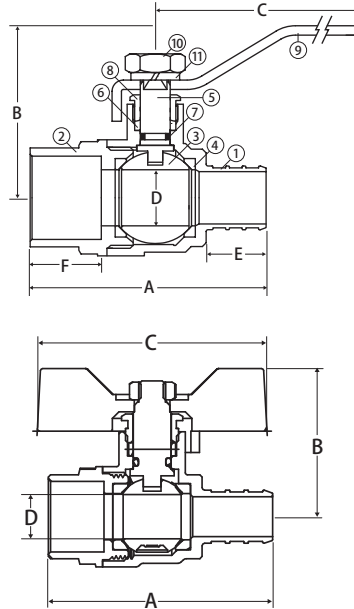


## Lead Free Brass Ball Valve

2 Piece, Standard Port, Solder x Crimp Pex Connection, 400 CWP

**S-412G**



### FEATURES

Dezincification Resistant Brass Alloy  
Gland Follower and Single O-Ring Stem Design  
Blow-Out Proof Stem  
100% Leak Tested  
IAPMO Certified - NSF 61 & NSF 372 & NSF 14  
ASTM B828 x ASTM F1807  
Wetted Surfaces Contain Less than .25% Lead Content

### CERTIFICATIONS/APPROVALS

IAPMO Certified  
- NSF 61-8  
- NSF 372  
- Uniform Plumbing Code (cUPC)  
• IAPMO/ANSI Z1157-2014  
• NSF/ANSI 14-2014  
ASME/ANSI B16.18

### PRESSURE/TEMPERATURE RATING

Body rated to 400 CWP  
Crimp connection rated to 100 CWP up to 180°F

### MATERIALS

No.	Part	Material
1	Body	Lead Free Brass - C46500
2	End Connection	Lead Free Brass - C46500
3	Ball	Lead Free Brass - C46500
4	Seat (2)	PTFE
5	Stem	Lead Free Brass - C46500
6	Packing	PTFE
7	Stem O-ring	Buna-N
8	Packing Gland	Lead Free Brass - C46500
9	Handle	Steel - Chrome Plated
10	Handle Nut	Steel - Chrome Plated
11	Lock Washer	Steel - Chrome Plated

### DIMENSIONS

Part No	Size	A	B	C	D	E	F
Lever Handle							
103-533PG	1/2"	1.97	1.65	3.54	0.35	0.63	0.51
103-534PG	3/4"	2.52	1.72	3.54	0.53	0.63	0.75
103-535PG	1"	2.99	1.95	4.29	0.71	0.8	0.86
T-Handle							
103-533PG-TH	1/2"	1.97	1.32	2.05	0.35	-	-
103-534PG-TH	3/4"	2.52	1.76	2.68	0.53	-	-
103-535PG-TH	1"	2.99	1.78	2.68	0.71	-	-