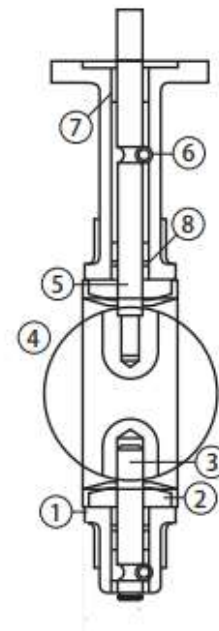


Lug & Wafer Style • Butterfly Valve • Epoxy-Coated Ductile Iron Body • Stainless Steel Disc



Installation:

1. Make sure the valve is in the closed position
2. Spread the flanges apart far enough to allow the valve to slip between the flanges
3. Center the valve between the flanges
4. Allow the flanges to return to their un-spread state
5. Place and hand-tighten all flange bolts
6. Check for free movement of the disc by slowly opening the valve. If there is no obstruction encountered, leave the valve in the open position and tighten all flange bolts.
7. Keep the flange faces parallel while tightening the bolts/studs in a star pattern.
8. Once tightening is complete, check the valve and make sure that it can fully open and close.

Operation:

Rotate the valve handle in the direction indicated for open or close.

Maintenance:

No regular maintenance is required and replacement components are not offered by Jomar.

Valve Disassembly:

1. Open the valve fully once removed from the piping system.
2. Remove the handle/actuator
3. Remove the locating pins (6)
4. Pull out the upper shaft (5)
5. Pull out the bottom shaft (3)
6. Remove the disc (4) from the liner, but do not damage the disc.
7. Remove liner
8. Remove the bushings (7) and o-rings (8) by tapping with a blunt instrument (if applicable)
9. Inspect all components for wear and replace as required.

Material Specifications

No.	Part	Materials
1	Body	Ductile Iron - Epoxy Coated
2	Seat	*Varies*
3	Lower Shaft*	410 Stainless Steel
4	Disc	CF8M Stainless Steel
5	Upper Shaft	410 Stainless Steel
6	Locating Pin (2)	Carbon Steel
7	Bushing (3)	PTFE
8	O-ring (2)	EPDM

Note: 2" - 12" only, 14" - 36" are pin through shaft style

Valve Assembly:

1. Clean all reusable parts
2. Tap the bushings and o-rings carefully (if applicable)
3. To facilitate assembly, apply a lubricant that is compatible with elastomers
4. Press the liner into the body evenly.
5. Insert disc (4) into the liner in the open position. Make sure that the broached end of the disc is at the upper shaft side of the body.
6. Using a general purpose lubricant, coat the upper shaft (5) and install in the body
7. Install the lower shaft (9)
8. Install the locating pins (6) into both shafts
9. Install the operator
10. Open and close the valve several times to check the assembly
11. Follow installation instructions to reinstall the valve.

Consider seat material compatibility when selecting 1 of 4 seat options:

EPDM, PTFE, BUNA, VITON

Material compatibility can be found at the link below:

<https://www.jomarvalve.com/docs/resources/res-mc.pdf>

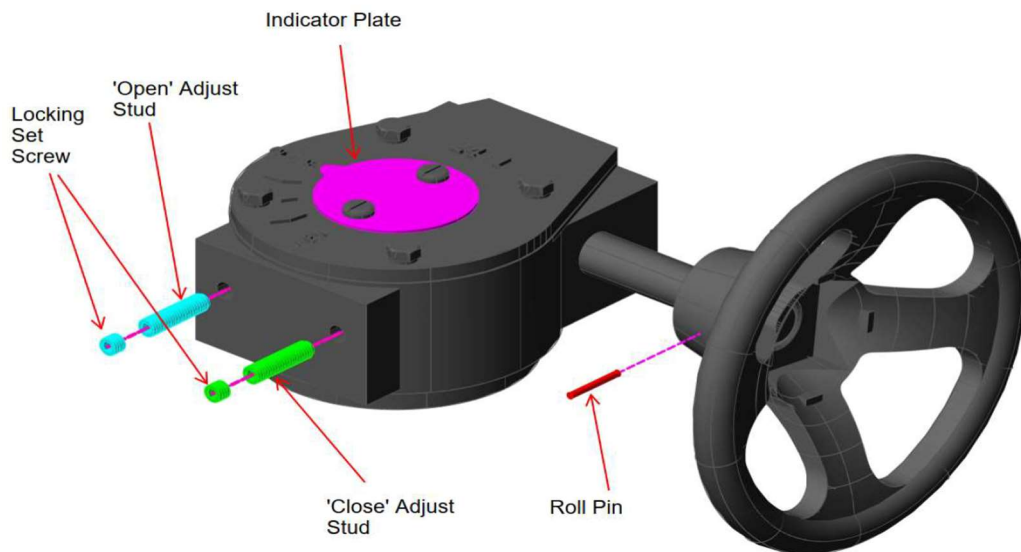
Verify that the seat material selected is rated for the temperature and pressure of the application per the table below:

Seat Temperature Ranges					
	Size	Buna-N	EPDM	Viton	PTFE
Temperature range (° F)	2" - 36"	10 to 180	-30 to 250	10 to 275	-20 to 250
Inline service (psi)	2" - 12"	225	225	225	225
	14" - 36"	150	150	150	150
Dead end service w/down stream flange (psi)	2" - 12"	225	225	225	100
Dead end service w/o down stream flange (psi)	2" - 12"	100	100	100	50

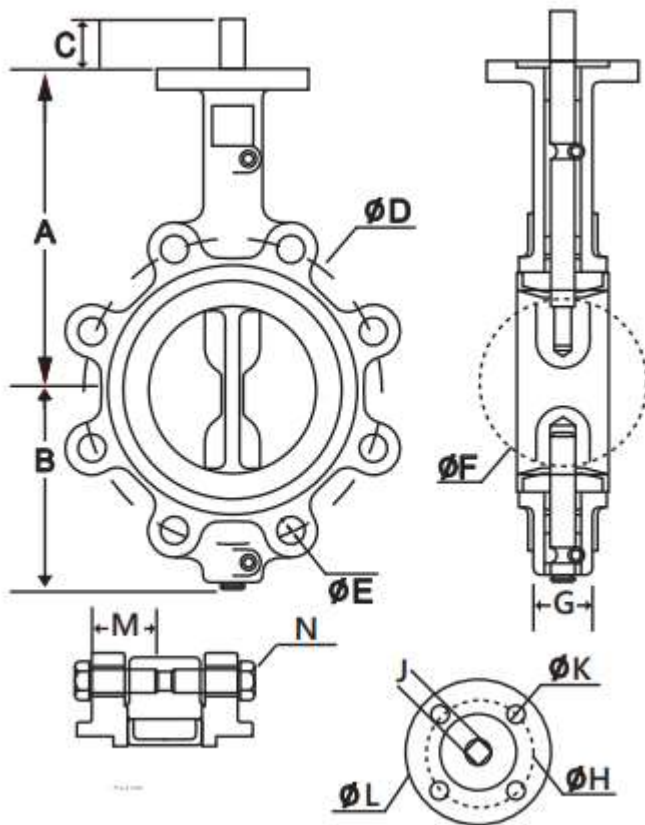
**Wafer butterfly valves cannot be used for dead-end service.

For information on adjusting a gear operator, refer to the IO&M link below:

<https://www.jomarvalve.com/docs/resources/iom-gearop.pdf>



Lug Style

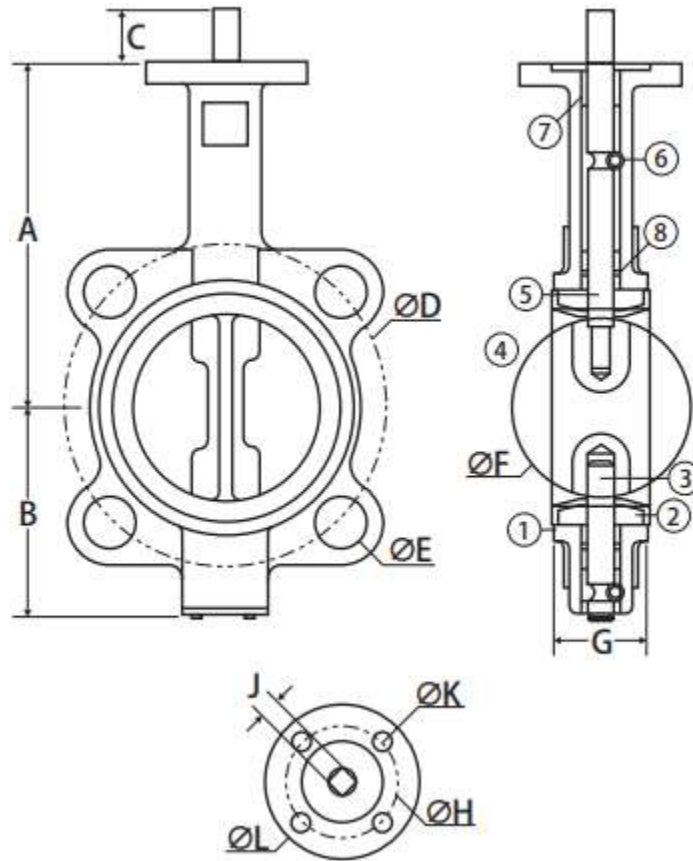


Dimensions

Part No.	Size	A	B	C	D	E	F	G	H	J	K	L	M	N	Weight
600-02DS_L	2"	6.34	3.46	1.26	4.74	4 : 5/8"	2.07	1.65	1.97	0.35	4 : 0.28	3.03	1.50	5/8-11UNC	8.38
600-212DS_L	2-1/2"	6.89	3.82	1.26	5.50	4 : 5/8"	2.54	1.77	1.97	0.35	4 : 0.28	3.03	1.50	5/8-11UNC	9.26
600-03DS_L	3"	7.13	4.06	1.26	6.00	4 : 5/8"	3.10	1.77	1.97	0.35	4 : 0.28	3.03	1.50	5/8-11UNC	10.36
600-04DS_L	4"	7.87	4.80	1.26	7.50	8 : 5/8"	4.09	2.03	2.76	0.43	4 : 0.35	3.54	1.75	5/8-11UNC	19.84
600-05DS_L	5"	8.39	5.31	1.26	8.50	8 : 3/4"	4.85	2.17	2.76	0.55	4 : 0.35	3.54	1.75	3/4-10UNC	24.03
600-06DS_L	6"	8.90	5.79	1.26	9.51	8 : 3/4"	6.13	2.17	2.76	0.55	4 : 0.35	3.54	2.00	3/4-10UNC	31.31
600-08DS_B	8"	10.24	7.20	1.61	11.75	8 : 3/4"	7.97	2.36	4.02	0.67	4 : 0.47	4.92	2.00	3/4-10UNC	40.12
600-10DS_G	10"	11.50	7.99	1.61	14.25	12 : 7/8"	9.86	2.64	4.02	0.87	4 : 0.47	4.92	2.25	7/8-9UNC	59.08
600-12DS_G	12"	13.27	9.53	1.61	17.01	12 : 7/8"	11.87	2.97	4.02	0.87	4 : 0.47	5.51	2.50	7/8-9UNC	88.18
600-14DS_G	14"	14.49	10.71	1.77	18.74	12 : 1"	13.12	2.97	4.02	0.87	4 : 0.47	5.51	2.50	1-8UNC	123.46
600-16DS_G	16"	15.75	13.11	2.02	21.26	16 : 1"	15.34	4.02	5.51	1.06	4 : 0.71	6.89	3.00	1-8UNC	211.64
600-18DS_G	18"	16.54	14.33	2.02	22.76	16 : 1-1/8"	17.34	4.49	5.51	1.06	4 : 0.71	6.89	3.50	1-1/8-7UNC	268.96
600-20DS_G	20"	18.90	15.31	2.53	25.00	20 : 1-1/8"	19.35	5.00	5.51	1.42	4 : 0.71	6.89	4.00	1-1/8-7UNC	445.33
600-24DS_G	24"	22.13	17.83	2.76	29.51	20 : 1-1/4"	23.33	5.94	6.50	1.42	4 : 0.91	10.88	4.50	1-1/4-7UNC	595.25
600-30DS_G	30"	25.98	21.23	-	-	-	29.30	-	-	-	-	11.81	-	-	939.17
600-36DS_G	36"	28.35	25.84	-	-	-	34.04	-	-	-	-	11.81	-	-	1604.96

*Lug Style Butterfly Valve. Dimensions and drawings available upon request.

Wafer Style



Part No.	Size	Dimensions											Weight
		A	B	C	D	E	F	G	H	J	K	L	
900-02DS_L	2"	6.34	3.15	1.26	4.74	4 : 0.75	2.07	1.65	1.97	0.35	4 : 0.28	3.03	5.51
900-212DS_L	2-1/2"	6.89	3.50	1.26	5.50	4 : 0.75	2.54	1.77	1.97	0.35	4 : 0.28	3.03	7.05
900-03DS_L	3"	7.13	3.74	1.26	6.00	4 : 0.75	3.10	1.77	1.97	0.35	4 : 0.28	3.03	8.38
900-04DS_L	4"	7.87	4.49	1.26	7.50	8 : 0.75	4.09	2.03	2.76	0.43	4 : 0.35	3.54	10.80
900-05DS_L	5"	8.39	5.00	1.26	8.50	8 : 0.87	4.85	2.17	2.76	0.55	4 : 0.35	3.54	15.43
900-06DS_L	6"	8.90	5.47	1.26	9.51	8 : 0.87	6.13	2.17	2.76	0.55	4 : 0.35	3.54	17.20
900-08DS_B	8"	10.24	6.89	1.61	11.75	8 : 0.87	7.97	2.36	4.02	0.67	4 : 0.47	4.92	29.10
900-10DS_G	10"	11.50	7.99	1.61	14.25	12 : 0.98	9.86	2.64	4.02	0.87	4 : 0.47	4.92	42.33
900-12DS_G	12"	13.27	9.53	1.61	17.01	12 : 0.98	11.87	2.97	4.02	0.87	4 : 0.47	5.51	71.65
900-14DS_G	14"	14.49	10.51	1.77	18.74	12 : 1.14	13.12	2.97	4.02	0.87	4 : 0.47	5.51	91.05
900-16DS_G	16"	15.75	12.17	2.02	21.26	16 : 1.14	15.34	4.02	5.51	1.06	4 : 0.71	7.76	134.48
900-18DS_G	18"	16.61	12.91	2.02	22.76	16 : 1.26	17.34	4.49	5.51	1.06	4 : 0.71	7.76	174.16
900-20DS_G	20"	18.90	14.21	2.53	25.00	20 : 1.26	19.35	5.00	5.51	1.42	4 : 0.71	7.76	282.19
900-24DS_G	24"	22.13	18.07	2.76	29.51	20 : 1.38	23.33	5.94	6.50	1.42	4 : 0.91	10.87	414.47
900-30DS_G	30"	25.98	21.22	2.60	36.00	28 : 1.38	29.30	-	10.00	-*	8 : 0.71	11.81	723.12
900-36DS_G	36"	28.35	25.83	4.65	41.34	32 : 1.61	34.04	-	10.00	-*	8 : 0.71	11.81	1571.89

*Stem is round with key, dimensions and drawings available upon request.