

LP GAS CATALOG



COMMITMENT TO QUALITY

All Jomar Valve products are made with the highest quality alloys and materials, ensuring optimum product performance and longevity. Our extended product warranties are the result of 100% testing every product.



SPECIFICATIONS

Jomar's third-party certified product line is an ideal choice for creating specifications. All of our products can be found in Arcom MasterSpec® to help with your bid spec needs. Several of our products are also available in "BIM" and other CAD formats.



TECHNOLOGY

Investments in technology continue to make doing business with Jomar Valve convenient and simple. Our aim is to find new ways to support customer needs. We now offer electronic billing and EDI along with a mobile friendly website and eCommerce portal.



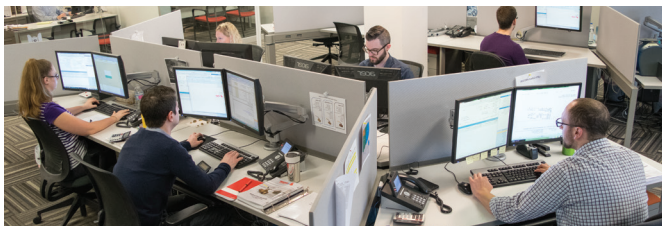
ENGINEERING AND TECHNICAL SUPPORT

Jomar has decades of combined industry knowledge and experience. Our product line specialists and staff engineers are at your disposal to support any technical inquiries and help resolve issues quickly and efficiently.



FILL RATES & DELIVERY

With over 15 nationwide stocking warehouses and an extensive stock level at our headquarters in Warren, MI, Jomar's goal is to provide industry leading fill rates and local inventory.



CUSTOMER SERVICE

Jomar Valve prides itself on creating a culture around customers and their needs. A dedicated team of trained customer service agents are always available and eager to assist with any questions by phone, fax, email or online live chat.



TESTING & CERTIFICATIONS

To meet application and specification needs Jomar Valve carries a wide range of product certifications. Third-party testing, inspection and validation for all our valves is our assurance to you that we are committed to providing certified products for the right application.



PRODUCT RANGE

Jomar's broad and consistently expanding product range enables us to support a wide variety of industries and applications.

Table of Contents by Model Number

Brass Ball Valves

T-100NE.....	4
T-100SSE.....	4
T-82-M.....	4
T-100FMN.....	5
T-100STN.....	5
T-100-UE.....	5

Lead Free Brass Ball Valves

TWV-3W-KIT-G.....	6
TWV-3W-KIT-G-1.....	6
T-100C.....	6
S-100C.....	6

Gas Ball Valves

T-204DU.....	7
T-204.....	7
T-203DU.....	8
T-203.....	8
LP DU.....	8
T-205.....	9
T-2005C.....	9
T-2004C.....	9

Lockwings

175-LWN.....	10
175-LWIN.....	10
125-LWN.....	10
175-LWIBP.....	11
125-LWIBP.....	11
125-LWBP.....	11
175-LWMBP.....	11
125-LWUBP.....	11
125-LWBP-S.....	12
125-LWBP-SA.....	12
175-LWIBP.....	12
175-LWBP.....	13
Extended Male Tailpiece.....	13
Bypass Key.....	13

Carbon & Stainless Steel Valves

T-SS-900N.....	14
T-SS-1001N.....	14
T-SS-2000N.....	14
T-SS-2000N-MF.....	14
T-SS-1000N-4B.....	15
S-SS-1000N-4B.....	15
T-SS-1000.....	15

T-SS-2000N-DH.....	15
T-SS-2001N-4B.....	16
S-SS-2001N-4B.....	16
T-SS-2002N-DUE.....	16
S-SS-2002N-DUE.....	16
T-CS-1001N-SS.....	17
T-CS-2002N-SS.....	17
T-CS-1000N-SS-4B.....	17
S-CS-1000N-SS-4B.....	17
T-CS-2001N-SS-4B.....	18
S-CS-2001N-SS-4B.....	18
T-CS-2002N-SS-DUE.....	18
S-CS-2001N-SS-4B.....	18

Flange Ball Valves

FL-CS-100-300.....	19
FL-SS-100-150.....	19
FL-SS-100-300.....	19
FL-CS-100-150.....	19

Thread Sealant

White Stuff.....	20
Green Stuff.....	20
Heavyweight.....	21
WOG Plus.....	21

Hi-Temp.....	22
--------------	----

Accessories

Lift-N-Lock.....	23
Stem Extension.....	23
Memory Stop.....	23
Long Neck T-Handle.....	23
Slo-Ball Handle.....	23
Steel Lever Handle.....	24
Locking Handle.....	24
Round Handle.....	24
Red T-Handle.....	24
Square Head Top.....	25
T-SS-2005N-DUE Handle.....	25
Pressure Port.....	25

Services.....	26
---------------	----

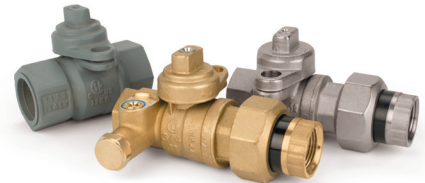
Terms & Conditions.....	27
-------------------------	----



Brass Ball Valves, Page 4



Gascocks, Page 7



Lockwings, Page 10



Stainless Steel Valves, Page 14



Carbon Steel Valves, Page 17



Flanged Ball Valves, Page 19



Thread Sealant, Page 20



Accessories, Page 23

T-100NE

2 Piece, Full Port, Threaded Connection, 600 WOG



Part No.	Size	Case	Carton	Weight
100-701	1/4"	120	12	41
100-702	3/8"	120	12	40
100-703	1/2"	100	10	55
100-704	3/4"	60	10	52
100-705	1"	36	6	56
100-706	1-1/4"	24	4	57
100-707	1-1/2"	16	2	52
100-708	2"	12	2	62
100-709	2-1/2"	6	2	59
100-710	3"	4	2	56
100-711	4"	2	1	53

- Blow-out proof stem
- Triple sealing stem with 2 FKM o-rings and 2nd Generation PTFE seal
- 100% leak tested
- 100% Made in Italy
- Leakproof stem - Lifetime Warranty
- 29 in-Hg vacuum rating



T-100SSE

2 Piece, Full Port, Threaded Connection, 600 WOG, Stainless Steel Ball and Stem



Part No.	Size	Case	Carton	Weight
100-501	1/4"	120	12	41
100-502	3/8"	120	12	40
100-503	1/2"	100	10	54
100-504	3/4"	60	10	52
100-505	1"	36	6	59
100-506	1-1/4"	24	4	57
100-507	1-1/2"	16	2	58
100-508	2"	12	2	70
100-509	2-1/2"	6	2	69
100-510	3"	4	2	70

- Blow-out proof stem
- **T.E.A. Ternary Eco Alloy® coated body, which prevents dezincification and galvanic corrosion**
- Triple sealing stem with 2 FKM o-rings and 2nd Generation PTFE seal
- 100% leak tested
- 100% Made in Italy
- Leakproof stem - Lifetime Warranty
- 29 in-Hg vacuum rating



T-82-M

2 Piece, Full Port, Threaded Connection, Mini Valves, 600 WOG



Part No.	Size	Case	Carton	Weight
Screwdriver Slot				
100-295	1/4" FIP x 1/4" MIP	350	35	58
Lever Handle				
100-297	1/8" FIP x 1/8" MIP	200	20	40
100-298	1/4" FIP x 1/8" MIP	250	25	47
100-299	1/4" FIP x 1/4" MIP	200	20	39
100-300	1/4" FIP x 1/4" FIP	250	25	44

- Blow-out proof stem
- 2 FKM o-rings
- Greater flow rate
- Large raised wrench flats
- 100% leak tested
- 100% Made in Italy
- Leakproof stem - Lifetime Warranty



100-295



100-297



100-298



100-299



100-300



T-100FMN

2 Piece, Full Port, Male x Female Threaded Connection, 600 WOG



Part No.	Size	Case	Carton	Weight
100-601	1/4"	100	10	36
100-602	3/8"	100	10	36
100-603	1/2"	100	10	54
100-604	3/4"	60	10	53
100-605	1"	36	6	55

- Blow-out proof stem
- Triple sealing stem with 2 FKM o-rings and 2nd Generation PTFE seal
- 100% leak tested
- 100% Made in Italy
- Leakproof stem - Lifetime Warranty
- 29 in-Hg vacuum rating



T-100STN

2 Piece, Full Port, Threaded Connection, 600 WOG, with Side Tap



Part No.	Size	Case	Carton	Weight
170-103	1/2"	80	8	52
170-104	3/4"	60	10	58
170-105	1"	36	6	59
170-106	1-1/4"	24	4	62
170-107	1-1/2"	16	2	56
170-108	2"	12	2	64

- Blow-out proof stem
- Triple sealing stem with 2 FKM o-rings and 2nd Generation PTFE seal
- 3/8" - 1" have 1/8" FIP side tap
- 1-1/4" - 2" have 1/4" FIP side tap
- 100% leak tested
- 100% Made in Italy
- Leakproof stem - Lifetime Warranty
- 29 in-Hg vacuum rating



T-100-UE

2 Piece, Full Port, Single Union End, Threaded Connection, 600 WOG, with Side Tap



Part No.	Size	Case	Carton	Weight
160-103	1/2"	60	10	54
160-104	3/4"	36	6	48
160-105	1"	24	4	53
160-106	1-1/4"	16	2	59
160-107	1-1/2"	8	2	39
160-108	2"	8	2	59

- Blow-out proof stem
- Triple sealing stem with 2 FKM o-rings and 2nd Generation PTFE seal
- FIP x union FIP
- 3/8" - 1" have 1/8" FIP side tap
- 1-1/4" - 2" have 1/4" FIP side tap
- 100% leak tested
- 100% Made in Italy
- Leakproof stem - Lifetime Warranty
- 29 in-Hg vacuum rating



Lead Free Brass Ball Valves



TWV-3W-KIT-G

Lead Free Brass, 3-Way Ball, Tankless Water Heater Valve Kit, Standard Port, 600 WOG



Part No.	Size	Connection	v	Weight
810-504G	3/4"	Threaded	12	48
810-514G	3/4"	Sweat	12	48
810-524G	3/4"	Press	12	48

- Dezincification resistant brass alloy 1/2"-2" valves
- Triple sealing stem with 2 FKM o-rings and Teflon seal
- Blow-out proof stem
- 100% leak tested
- NSF 61 / NSF 372 Certified
- Leakproof stem - Lifetime Warranty
- 29 in-Hg vacuum rating
- Wetted surfaces contain less than .25% lead content



NSF

TWV-3W-KIT-G-1

Lead Free Brass, 3 Way Ball, Tankless Water Heater Valve Kit, Standard Port, 600 WOG



Part No.	Size	Connection	v	Weight
810-505G*	1"	Threaded	12	48

* 1" kit does not include a pressure relief valve

- Dezincification resistant brass alloy 1/2"-2" valves
- Triple sealing stem with 2 FKM o-rings and Teflon seal
- Blow-out proof stem
- 100% leak tested
- NSF 61 / NSF 372 Certified
- Leakproof stem - Lifetime Warranty
- 29 in-Hg vacuum rating
- Wetted surfaces contain less than .25% lead content



NSF

T-100CG

2 Piece, Full Port, Threaded Connection, Dezincification Resistant Brass, 600 WOG



Part No.	Size	Case	Carton	Weight
100-403G	1/2"	100	10	44
100-404G	3/4"	80	8	62
100-405G	1"	36	6	45
100-406G	1-1/4"	24	4	47
100-407G	1-1/2"	16	2	51
100-408G	2"	12	2	58
100-409G	2-1/2"	2	-	19
100-410G	3"	2	-	28
100-411G	4"	2	1	53

- Dezincification resistant brass alloy 1/2"-2" valves
- Triple sealing stem with 2 FKM o-rings and 2nd Generation PTFE seal
- Blow-out proof stem
- 100% leak tested
- 100% Made in Italy
- NSF 61 / NSF 372 Certified
- Leakproof stem - Lifetime Warranty
- 29 in-Hg vacuum rating
- Wetted surfaces contain less than .25% lead content



UL LISTED NSF

S-100CG

2 Piece, Full Port, Solder Connection, Dezincification Resistant Brass, 600 WOG



Part No.	Size	Case	Carton	Weight
100-413G	1/2"	120	12	51
100-414G	3/4"	72	12	57
100-415G	1"	36	6	47
100-416G	1-1/4"	24	4	47
100-417G	1-1/2"	16	2	53
100-418G	2"	12	2	63
100-419G	2-1/2"	2	-	17
100-420G	3"	2	-	25
100-421G	4"	1	-	24

- Dezincification resistant brass alloy 1/2"-2" valves
- Triple sealing stem with 2 FKM o-rings and 2nd Generation PTFE seal
- Blow-out proof stem
- 100% leak tested
- 100% Made in Italy
- NSF 61 / NSF 372 Certified
- Leakproof stem - Lifetime Warranty
- 29 in-Hg vacuum rating
- Wetted surfaces contain less than .25% lead content



UL LISTED NSF

T-204DU

2 Piece, Integrated Dielectric Union End, 600 WOG



Part No.	Size	Case	Carton	Weight
FIP UE x Flare				
101-513DU	1/2" x 1/2"	80	8	54

FIP UE x FIP				
101-403DU	1/2" x 1/2"	80	8	54
101-404DU	3/4" x 3/4"	40	4	41

MIP UE x Flare				
101-703DU	1/2" x 1/2"	60	6	46
101-704DU	3/4" x 5/8"	40	4	44

MIP UE x FIP				
101-803DU	1/2" x 1/2"	60	6	46
101-804DU	3/4" x 3/4"	40	4	47

- Meets NFPA 58 dielectric union requirement
- Valve can be locked in the closed position by reversing the handle
- 2 FKM o-rings
- 100% leak tested
- 100% Made in Italy
- Leakproof stem - Lifetime Warranty



T-204

2 Piece, 600 WOG



T-handle	Teardrop	Size	Case	Carton	Weight
FIP x FIP					
101-401	101-411	1/4"	120	12	45
101-402	101-412	3/8"	120	12	40
101-403	101-413	1/2"	120	12	50
101-404	101-414	3/4"	80	8	56
101-404BRT*		3/4"	100	10	59

*Brass t-handle

Flare x FIP					
101-502	101-512	3/8" x 1/2"	140	14	49
101-503	101-513	1/2" x 1/2"	140	14	60
101-504	—	5/8" x 3/4"	80	8	51

Flare x Flare					
101-601	—	1/2" x 3/8"	120	12	45
101-602	101-612	3/8" x 3/8"	120	12	49
101-603	101-613	1/2" x 1/2"	120	12	54
101-604	101-614	5/8" x 5/8"	80	8	51

MIP x Flare					
101-702	—	1/2" x 3/8"	120	12	48
101-703	—	1/2" x 1/2"	120	12	52

- Valve can be locked in the closed position by reversing the handle
- T-handle and teardrop handle available on most configurations
- 2 FKM o-rings
- 100% leak tested
- 100% Made in Italy
- Leakproof stem - Lifetime Warranty
- For sizes above 3/4" use T-100CG



Gas Ball Valves



T-203DU

2 Piece, Dielectric Union End, 600 WOG, with Side Tap



Part No.	Size	Case	Carton	Weight
MIP UE x FIP				
102-303DU	1/2"	60	6	49
102-304DU	3/4"	40	4	49
MIP UE x Flare				
102-403DU	1/2"	60	6	48
FIP UE x FIP				
102-313DU	1/2"	60	6	43
102-314DU	3/4"	40	4	44
FIP UE x Flare				
102-413DU	1/2"	60	6	42

- Meets NFPA 58 dielectric union requirement
- Eliminates need for test tee and labor to install
- Removable plug enables port for pressure gauge
- Valve can be locked in the closed position by reversing the handle
- 2 FKM o-rings
- 1/8" side tap
- 100% leak tested
- 100% Made in Italy
- Leakproof stem - Lifetime Warranty



T-203

2 Piece, 600 WOG, with Side Tap



Part No.	Size	Case	Carton	Weight
FIP x FIP				
102-301	1/4"	100	10	43
102-302	3/8"	100	10	39
102-303	1/2"	100	10	47
102-304	3/4"	80	8	61
Flare x Flare				
102-402	3/8"	120	12	51
102-403	1/2"	120	12	57
102-404	5/8"	80	8	54
Flare x FIP				
102-405	1/2"	100	10	49

- Eliminates need for test tee and labor to install
- Ideal for use outside in extremely cold climates
- Removable plug enables port for pressure gauge
- Valve can be locked in the closed position by reversing the handle
- 2 FKM o-rings
- 1/8" side tap
- 100% leak tested
- 100% Made in Italy
- Leakproof stem - Lifetime Warranty
- For sizes above 3/4" use T-100STN

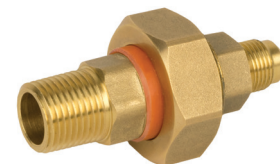


LP DU

LP Dielectric Union, Brass MIP x Flare, 250 PSI

Part No.	Size	Case	Carton	Weight
703-102	1/2" MIP x 3/8" FL	100	10	56
703-103	1/2" MIP x 1/2" FL	100	10	58
703-104	1/2" MIP x 5/8" FL	100	10	62
704-102	3/4" MIP x 3/8" FL	60	6	46
704-103	3/4" MIP x 1/2" FL	60	6	47
704-104	3/4" MIP x 5/8" FL	60	6	50

- Meets NFPA 58 dielectric union requirement
- Prevents accelerated corrosion
- -40°F to 180°F - HNBR Seal



T-205

2 Piece, 400 WOG



Part No.	Size	Case	Carton	Weight
Yellow Teardrop Handle				
102-513	1/2"	120	12	49
102-514	3/4"	100	10	57

Red T-handle				
102-503	1/2"	140	14	58
102-504	3/4"	100	10	57
102-505	1"	60	10	55

- Valve can be locked in the closed position by reversing the handle
- Triple sealing stem with 2 FKM o-rings and Teflon® seal
- 100% leak tested
- 100% Made in Italy
- Leakproof stem - Lifetime Warranty



T-2005C

2 Piece, 175 WOG

Part No.	Size	Case	Carton	Weight
Yellow Handle				
102-603	1/2"	100	10	39
102-604	3/4"	100	10	52
102-605	1"	60	6	51

Red Handle				
102-623	1/2"	100	10	39
102-624	3/4"	100	10	52
102-625	1"	60	6	51

- Gland follower and single o-ring stem design
- Valve can be locked in the open or closed position by reversing the handle
- 100% leak tested



T-2004C

2 Piece, 175 WOG

Part No.	Size	Case	Carton	Weight
Flare x Flare				
102-612	3/8"	100	10	39
102-613	1/2"	100	10	52
102-614	5/8"	60	6	51

Flare x FIP				
102-633	1/2"	100	10	29

- Gland follower and single o-ring stem design
- Valve can be locked in the closed position by reversing the handle
- Plastic caps to protect flare connection and threads
- 100% leak tested



175-LWN

Utility Gas Ball Valve, Full Port, 175 PSIG



Part No.	Size	Case	Carton	Weight
240-003B	1/2"	40	10	49
240-003P	1/2"	40	10	47
240-004B	3/4"	40	10	52
240-004P or T	3/4"	40	10	52
240-005B	1"	24	6	49
240-005P or T	1"	24	6	49
240-006B	1-1/4"	16	4	47
240-006P or T	1-1/4"	16	4	47
240-007B	1-1/2"	12	3	48
240-007P or T	1-1/2"	12	3	48
240-008B	2"	8	4	49
240-008P or T	2"	8	4	49

B = Brass, P = Painted, T = TEA Coated

- Tamper resistant lockwing cap
- 2 FKM o-rings
- Full port design to accommodate industry leading stop changers
- Lockwing accommodates standard barrel locks
- Maintenance free design
- 100% leak tested
- 100% Made in Italy
- Leakproof stem - Lifetime Warranty



175-LWIN

Utility Gas Ball Valve, Full Port, 175 PSIG, with Insulated Tail Piece



Part No.	Size	Case	Carton	Weight
241-004D	3/4"	20	5	40
241-004P or T	3/4"	20	5	40
241-005D	1"	12	2	43
241-005P	1"	12	2	50
241-005T	1"	12	2	41
241-006D	1-1/4"	8	2	43
241-006P	1-1/4"	8	2	46
241-006T	1-1/4"	8	2	35
241-008T	2"	4	2	41

D = Brass, P = Painted, T = TEA Coated

- Tamper resistant lockwing cap
- 2 FKM o-rings
- Full port design to accommodate industry leading stop changers
- Lockwing accommodates standard barrel locks
- Maintenance free design
- 100% leak tested
- 100% Made in Italy
- Leakproof stem - Lifetime Warranty



125-LWN

Utility Gas Ball Valve, Full Port, 125 PSIG



Part No.	Size	Case	Carton	Weight
FIP x FIP				
242-004P	3/4"	40	10	41
242-005B	1"	24	6	40
242-005P	1"	24	6	40
MIP x FIP				
246-005B	1"	24	6	39

B = Brass, P = Painted

- Tamper resistant lockwing cap
- 2 FKM o-rings
- Full port design to accommodate industry leading stop changers
- Lockwing accommodates standard barrel locks
- Maintenance free design
- 100% leak tested
- 100% Made in Italy
- Leakproof stem - Lifetime Warranty



LT-JV-PS V6 071025

175-LWIBP Residential Bypass

Utility Gas Ball Valve, Full Port, Service Bypass, 175 PSIG, with Insulated Tail Piece



Part No.	Size	Case	Carton	Weight
243-004D	3/4"	20	5	39

175-LWIBP-EXT (Extended Male Tailpiece)

243-004EXT	3/4"	16	1	34
------------	------	----	---	----

- Tamper resistant lockwing cap
- 2 FKM o-rings
- Full port design to accommodate industry leading stop changers
- 100% leak tested
- 100% Made in Italy
- Leakproof stem - Lifetime Warranty
- Patented security shutter and lockwing tab
- US Patent no. 6,648,009



125-LWIBP Residential Bypass

Utility Gas Ball Valve, Full Port, Service Bypass, 125 PSIG, with Insulated Tail Piece



Part No.	Size	Case	Carton	Weight
243-005D	1"	16	4	53

- Tamper resistant lockwing cap
- 2 FKM o-rings
- Full port design to accommodate industry leading stop changers
- 100% leak tested
- 100% Made in Italy
- Leakproof stem - Lifetime Warranty
- Patented security shutter and lockwing tab
- US Patent no. 6,648,009



125-LWBP Residential Bypass

Utility Gas Ball Valve, Full Port, Service Bypass, 125 PSIG



Part No.	Size	Case	Carton	Weight
244-005B	1"	20	5	40
244-005P	1"	20	5	40

B = Brass, P = Painted

- Tamper resistant lockwing cap
- 2 FKM o-rings
- 100% leak tested
- 100% Made in Italy
- Leakproof stem - Lifetime Warranty
- Patented security shutter and lockwing tab
- US Patent no. 6,648,009



175-LWMBP Residential Bypass

Utility Gas Ball Valve, Full Port, Male x Male, Service Bypass, 175 PSIG



Part No.	Size	Case	Carton	Weight
243-204B	3/4"	40	10	52

B = Brass, P = Painted

- Tamper resistant lockwing cap
- 2 FKM o-rings
- 100% leak tested
- 100% Made in Italy
- Leakproof stem - Lifetime Warranty
- Patented security shutter and lockwing tab
- US Patent no. 6,648,009



125-LWUBP Union Non-Insulated Bypass

Utility Gas Ball Valve, Full Port, Service Bypass, 125 PSIG, with Union Tail Piece



Part No.	Size	Case	Carton	Weight
244-105B	1"	20	5	51
244-105P	1"	20	5	51

B = Brass, P = Painted

- Tamper resistant lockwing cap
- 2 FKM o-rings
- 100% leak tested
- 100% Made in Italy
- Leakproof stem - Lifetime Warranty
- Patented security shutter and lockwing tab
- US Patent no. 6,648,009



125-LWBP-S

Utility Gas Ball Valve, Full Port, Service Bypass, 125 PSIG, with Meter Nut and Swivel Connection



Part No.	Size	Case	Carton	Weight
245-005B	1" x 20LT	16	4	40
245-105B	1" x 30LT	16	4	40

- 20LT or 30LT
- Tamper resistant lockwing cap
- Meter nut and swivel connects directly to meter
- Lockwing accommodates standard barrel locks
- Maintenance free design
- 2 FKM o-rings
- 100% leak tested
- 100% Made in Italy
- Leakproof stem - Lifetime Warranty
- Patented security shutter and lockwing tab
 - US Patent no. 6,648,009



125-LWBP-SA

Utility Gas Ball Valve, Full Port, Service Bypass, 125 PSIG, Angle Body with Meter Nut and Swivel Connection



Part No.	Size	Case	Carton	Weight
245-005BA	1" x 20LT	16	4	41
245-105BA	1" x 30LT	16	4	41

- 20LT or 30LT
- Tamper resistant lockwing cap
- Meter nut and swivel connects directly to meter
- Lockwing accommodates standard barrel locks
- Maintenance free design
- 2 FKM o-rings
- 100% leak tested
- 100% Made in Italy
- Leakproof stem - Lifetime Warranty
- Patented security shutter and lockwing tab
 - US Patent no. 6,648,009



175-LWIBP Commercial Bypass

Utility Gas Ball Valve, Full Port, Service Bypass, 175 PSIG, with Insulated Tail Piece



Part No.	Size	Case	Carton	Weight
243-104T	3/4"	40	10	52
243-006D	1-1/4"	12	2	53
243-006T	1-1/4"	12	2	53
243-008T	2"	12	2	46

- Tamper resistant lockwing cap
- 2 FKM o-rings
- 3/4" bypass valve
- 100% leak tested
- 100% Made in Italy
- Leakproof stem - Lifetime Warranty
- 3/4" bypass valve



D = Brass, T = TEA Coated

LT-JV-PS V6 071025

175-LWBP Commercial Bypass

Utility Gas Ball Valve, Full Port, Service Bypass, 175 PSIG



Part No.	Size	Case	Carton	Weight
244-006B	1-1/4"	8	2	37
244-007B	1-1/2"	8	2	45
244-008B	2"	6	1	48
244-008T	2"	6	1	48

B = Brass, T = TEA Coated

- Tamper resistant locking cap
- 2 FKM o-rings
- 3/4" bypass valve
- 100% leak tested
- 100% Made in Italy
- Leakproof stem - Lifetime Warranty
- Meets or exceeds applicable part of DOT 192 and ANSI B16.33
- Threads conform to ANSI B1.20.1
- 3/4" bypass valve



Extended Male Tailpiece

Insulated Extended Male Tail Piece



Part No.	Size	Case	Carton	Weight
241-004EUM	3/4"	80	20	80

- To be ordered in conjunction with 175-LWIN or 175-LWIBP
- 100% Made in Italy

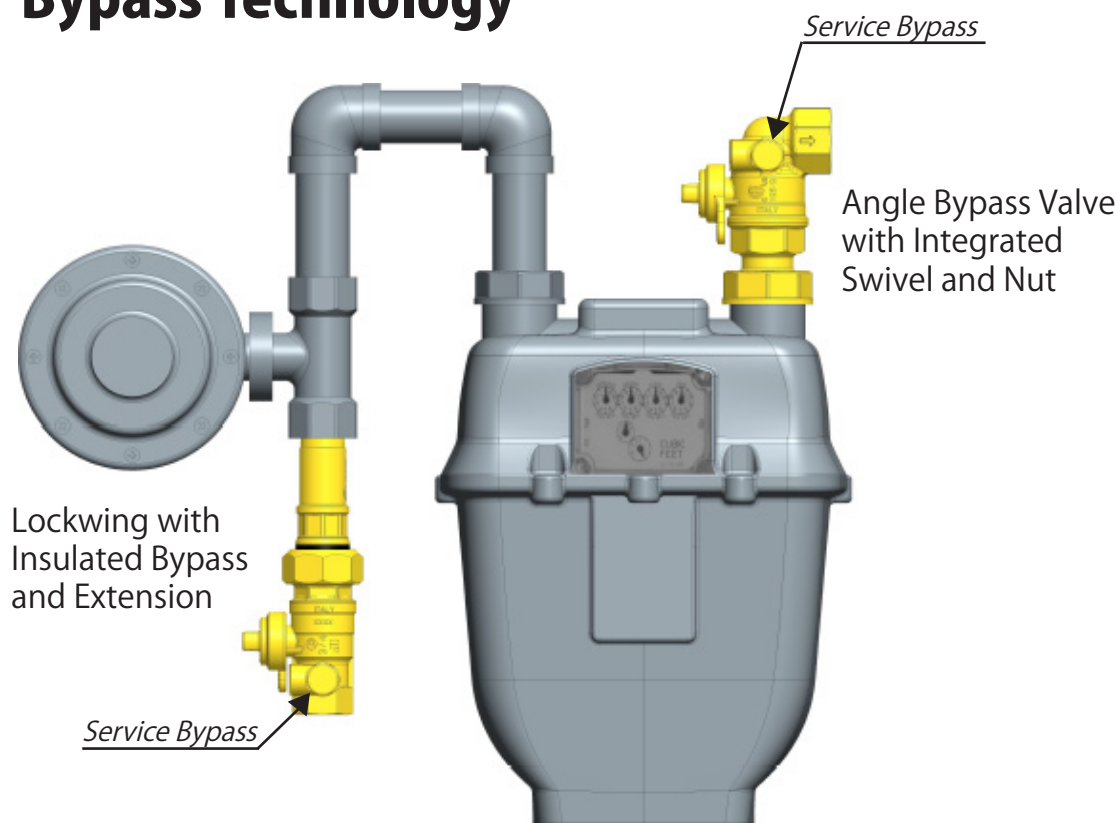


Bypass Key

Part No.	Description
243-004K	Bypass Key
243-004BK	Bypass Key Handle



Jomar Bypass Technology



Stainless Steel Ball Valves



T-SS-900N

2 Piece, Full Port, Threaded Connection, 1000 WOG, Stainless Steel Ball and Stem

Part No.	Size	Case	Carton	Weight
100-903	1/2"	10	5	21
100-904	3/4"	10	4	24
100-905	1"	12	2	22
100-906	1-1/4"	12	2	31
100-907	1-1/2"	6	2	24
100-908	2"	6	2	38

- Solid ball construction
- Latch lock handle may be locked in open or closed position
- 100% leak tested
- Wetted surfaces contain less than .25% lead content



T-SS-1001N

2 Piece, Full Port, Threaded Connection, 1000 WOG

Part No.	Size	Case	Carton	Weight
100-961	1/4"	80	10	51
100-962	3/8"	80	10	50
100-963	1/2"	60	10	47
100-964	3/4"	30	10	47
100-965	1"	20	10	47
100-966	1-1/4"	16	4	58
100-967	1-1/2"	8	4	46
100-968	2"	6	2	52

- Solid ball construction
- Latch lock handle may be locked in open or closed position
- 29 in-Hg vacuum rating
- 100% leak tested
- Wetted surfaces contain less than .25% lead content



T-SS-2000N

2 Piece, Standard Port, Threaded Connection, 2000 WOG

Part No.	Size	Case	Carton	Weight
100-931	1/4"	80	10	44
100-932	3/8"	80	10	45
100-933	1/2"	80	10	56
100-934	3/4"	30	10	43
100-935	1"	30	10	57
100-936	1-1/4"	20	5	53
100-937	1-1/2"	15	5	58
100-938	2"	10	5	58

- Solid ball construction
- 29 in-Hg vacuum rating
- Latch lock may be locked in open or closed position
- 100% leak tested
- Wetted surfaces contain less than .25% lead content



T-SS-2000N-MF

2 Piece, Standard Port, Male x Female Connection, 2000 WOG

Part No.	Size	Case	Carton	Weight
101-931	1/4"	80	10	44
101-933	1/2"	80	10	56
101-934	3/4"	30	10	43
101-935	1"	30	10	57

- Solid ball construction
- 29 in-Hg vacuum rating
- Latch lock may be locked in open or closed position
- 100% leak tested
- Wetted surfaces contain less than .25% lead content



T-SS-1000

1 Piece / 2 Piece, Full Port, Threaded Connection, Mini Valves, 1000 WOG

Part No.	Body	Size	Carton	Weight
500-098	Bar Stock	1/8" FIP x 1/8" MIP	12	2
500-099	Bar Stock	1/4" FIP x 1/4" MIP	10	4
500-101	Forged	1/4" FIP x 1/4" FIP	10	5

- Solid ball construction
- Corrosion resistant
- 29 in-Hg vacuum rating
- 100% leak tested
- Wetted surfaces contain less than .25% lead content



Stainless Steel

LT-JV-PS V6 071025

T-SS-1000N-4B

3 Piece 4 Bolt, Swing Out Body, Full Port, Threaded Connection, 1000 WOG

Part No.	Size	Carton	Weight
500-301	1/4"	10	10
500-302	3/8"	10	10
500-303	1/2"	10	14
500-304	3/4"	10	21
500-305	1"	8	25
500-306	1-1/4"	5	24
500-307	1-1/2"	5	34
500-308	2"	2	21
500-310	3"	2	56
500-311	4"	1	45
Threaded x Threaded Connection with Drain			
501-308	2"	2	23
Threaded x Flange Connection			
500-358	2"	2	26
Threaded x Flange Connection with Drain			
501-358	2"	2	28
Flange x Flange Connection			
500-368	2"	2	32

- Latch lock handle may be locked in open or closed positions
- 29 in-Hg vacuum rating
- 100% leak tested
- Wetted surfaces contain less than .25% lead content
- Repair kits available



S-SS-1000N-4B

3 Piece 4 Bolt, Swing Out Body, Full Port, Socket Weld Connection, 1000 WOG

Part No.	Size	Carton	Weight
500-343	1/2"	10	14
500-344	3/4"	10	21
500-345	1"	8	25
500-346	1-1/4"	5	24
500-347	1-1/2"	5	34
500-348	2"	2	21
500-350	3"	2	56
500-351	4"	1	45

- Latch lock handle may be locked in open or closed positions
- 29 in-Hg vacuum rating
- 100% leak tested
- Wetted surfaces contain less than .25% lead content
- Repair kits available

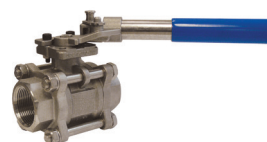


T-SS-2000N-DH

2 Piece, Standard Port, Threaded Connection, 2000 WOG, with Spring Return Handle

Part No.	Size	Carton	Weight
100-931DH	1/4"	10	6
100-932DH	3/8"	10	8
100-933DH	1/2"	10	14
100-934DH	3/4"	8	17
100-935DH	1"	8	20
100-936DH	1-1/4"	1	3
100-937DH	1-1/2"	1	4
100-938DH	2"	1	5

- 1-1/4" - 2" are 3 piece, 4 bolt pattern
- Fail safe position
- Solid ball construction
- 29 in-Hg vacuum rating
- 100% leak tested
- Wetted surfaces contain less than .25% lead content



Stainless Steel Ball Valves



T-SS-2001N-4B

3 Piece 4 Bolt Enclosed, Standard Port, Threaded Connection, 2000 WOG

Part No.	Size	Carton	Weight
601-603	1/2"	10	19
601-604	3/4"	10	23
601-605	1"	8	31
601-606	1-1/4"	6	31
601-607	1-1/2"	5	39
601-608	2"	2	22

- Latch lock handle may be locked in open or closed position
- Solid ball construction
- Blow out proof stem
- 29 in-Hg vacuum rating
- Fire safe rated
- 100% leak tested
- Wetted surfaces contain less than .25% lead content
- Repair kits available



S-SS-2001N-4B

3 Piece 4 Bolt Enclosed, Standard Port, Socket Weld Connection, 2000 WOG

Part No.	Size	Carton	Weight
601-623	1/2"	10	19
601-624	3/4"	10	23
601-625	1"	8	31
601-626	1-1/4"	6	31
601-627	1-1/2"	5	39
601-628	2"	2	22

- Latch lock handle may be locked in open or closed position
- Solid ball construction
- Blow out proof stem
- 29 in-Hg vacuum rating
- Fire safe rated
- 100% leak tested
- Wetted surfaces contain less than .25% lead content
- Repair kits available



T-SS-2002N-DUE

5 Piece, Full Port, Double Union End, Threaded Connection, 3000 WOG

Part No.	Size	Carton	Weight
100-983	1/2"	10	17
100-984	3/4"	8	20
100-985	1"	8	30
100-986	1-1/4"	6	34
100-987	1-1/2"	4	35
100-988	2"	2	26

- Solid ball construction
- 5 piece construction
- Mounting pad
- Reversible handle
- Adjustable stem packing with blow out proof stem
- 29 in-Hg vacuum rating
- 100% leak tested
- Wetted surfaces contain less than .25% lead content
- Repair kits available
- Locking handle available



S-SS-2002N-DUE

5 Piece, Full Port, Double Union End, Socket Weld Connection, 3000 WOG

Part No.	Size	Carton	Weight
101-983	1/2"	10	17
101-984	3/4"	8	20
101-985	1"	8	30
101-986	1-1/4"	6	34
101-987	1-1/2"	4	35
101-988	2"	2	26

- Solid ball construction
- 5 piece construction
- Mounting pad
- Reversible handle
- Adjustable stem packing with blow out proof stem
- 29 in-Hg vacuum rating
- 100% leak tested
- Wetted surfaces contain less than .25% lead content
- Repair kits available
- Locking handle available



Stainless Steel

LT-JV-PS V6 071025

T-CS-1001N-SS

2 Piece, Full Port, Threaded Connection, 1000 WOG, Stainless Steel Ball and Stem

Part No.	Size	Case	Carton	Weight
100-971	1/4"	80	10	51
100-972	3/8"	80	10	50
100-973	1/2"	60	10	47
100-974	3/4"	30	10	47
100-975	1"	20	10	47
100-976	1-1/4"	16	4	58
100-977	1-1/2"	8	4	46
100-978	2"	6	2	52

- Solid ball construction
- Latch lock handle may be locked in open or closed position
- 29 in-Hg vacuum rating
- 100% leak tested
- Wetted surfaces contain less than .25% lead content



T-CS-2000N-SS

2 Piece, Standard Port, Threaded Connection, 2000 WOG, Stainless Steel Ball and Stem

Part No.	Size	Case	Carton	Weight
100-951	1/4"	80	10	44
100-952	3/8"	80	10	45
100-953	1/2"	80	10	56
100-954	3/4"	30	10	43
100-955	1"	30	10	57
100-956	1-1/4"	20	5	53
100-957	1-1/2"	15	5	58
100-958	2"	10	5	58

- Solid ball construction
- 29 in-Hg vacuum rating
- Latch lock may be locked in open or closed position
- 100% leak tested
- Wetted surfaces contain less than .25% lead content



T-CS-1000N-SS-4B

3 Piece 4 Bolt, Swing Out Body, Full Port, Threaded Connection, 1000 WOG, Stainless Steel Ball and Stem

Part No.	Size	Carton	Weight
500-403	1/2"	10	14
500-404	3/4"	10	21
500-405	1"	8	25
500-406	1-1/4"	5	24
500-407	1-1/2"	5	34
500-408	2"	2	21

- Latch lock handle may be locked in open or closed positions
- 29 in-Hg vacuum rating
- 100% leak tested
- Wetted surfaces contain less than .25% lead content
- Repair kits available



S-CS-1000N-SS-4B

3 Piece 4 Bolt, Swing Out Body, Full Port, Socket Weld Connection, 1000 WOG, Stainless Steel Ball and Stem

Part No.	Size	Carton	Weight
500-503	1/2"	10	14
500-504	3/4"	10	21
500-505	1"	8	25
500-506	1-1/4"	5	24
500-507	1-1/2"	5	34
500-508	2"	2	21

- Latch lock handle may be locked in open or closed positions
- 29 in-Hg vacuum rating
- 100% leak tested
- Wetted surfaces contain less than .25% lead content
- Repair kits available



Carbon Steel Ball Valves



T-CS-2001N-SS-4B

3 Piece 4 Bolt Enclosed, Standard Port, Threaded Connection, 2000 WOG, Stainless Steel Ball and Stem

Part No.	Size	Carton	Weight
601-613	1/2"	10	19
601-614	3/4"	10	23
601-615	1"	8	31
601-616	1-1/4"	6	31
601-617	1-1/2"	5	39
601-618	2"	2	22

- Latch lock may be locked in open or closed position
- Solid ball construction
- Blow out proof stem
- 29 in-Hg vacuum rating
- Fire safe rated
- 100% leak tested
- Wetted surfaces contain less than .25% lead content
- Repair kits available



S-CS-2001N-SS-4B

3 Piece 4 Bolt Enclosed, Standard Port, Socket Weld Connection, 2000 WOG, Stainless Steel Ball and Stem

Part No.	Size	Carton	Weight
601-633	1/2"	10	19
601-634	3/4"	10	23
601-635	1"	8	31
601-636	1-1/4"	6	31
601-637	1-1/2"	5	39
601-638	2"	2	22

- Latch lock may be locked in open or closed position
- Solid ball construction
- Blow out proof stem
- 29 in-Hg vacuum rating
- Fire safe rated
- 100% leak tested
- Wetted surfaces contain less than .25% lead content
- Repair kits available



T-CS-2002N-SS-DUE

5 Piece, Full Port, Double Union End, Threaded Connection, 3000 WOG, Stainless Steel Ball and Stem

Part No.	Size	Carton	Weight
100-991	1/4"	10	20
100-992	3/8"	10	19
100-993	1/2"	10	18
100-994	3/4"	8	21
100-995	1"	8	31
100-996	1-1/4"	6	35
100-997	1-1/2"	4	36
100-998	2"	2	26

- Solid ball construction
- 5 piece construction
- Mounting pad
- Reversible handle
- Adjustable stem packing with blow out proof stem
- 29 in-Hg vacuum rating
- 100% leak tested
- Wetted surfaces contain less than .25% lead content
- Repair kits available
- Locking handle available



S-CS-2002N-SS-DUE

5 Piece, Full Port, Double Union End, Socket Weld Connection, 3000 WOG, Stainless Steel Ball and Stem

Part No.	Size	Carton	Weight
101-991	1/4"	10	20
101-992	3/8"	10	19
101-993	1/2"	10	18
101-994	3/4"	8	21
101-995	1"	8	31
101-996	1-1/4"	6	35
101-997	1-1/2"	4	36
101-998	2"	2	26

- Solid ball construction
- 5 piece construction
- Mounting pad
- Reversible handle
- Adjustable stem packing with blow out proof stem
- 29 in-Hg vacuum rating
- 100% leak tested
- Wetted surfaces contain less than .25% lead content
- Repair kits available
- Locking handle available



FL-CS-100-300

2 Piece, Full Port, Flanged Connection, Class 300, Stainless Steel Ball and Stem, Carbon Steel

Part No.	Size	Carton	Weight
600-228	2"	1	28
600-230	3"	1	62
600-231	4"	1	106
600-232	6"	1	225
600-233	8"	1	404

- Wrench operator
- Fire safe stem and body graphite seals
- Air tested seat leakage: 85 PSI
- Hydraulic tested body: 1124 PSI
- Locking device comes standard
- 100% leak tested
- Wetted surfaces contain less than .25% lead content



FL-SS-100-150

2 Piece, Full Port, Flanged Connection, Class 150, Stainless Steel

Part No.	Size	Carton	Weight
600-103	1/2"	2	7
600-104	3/4"	2	9
600-105	1"	2	14
600-107	1-1/2"	2	28
600-108	2"	2	20
600-109	2-1/2"	1	28
600-110	3"	1	46
600-111	4"	1	74
600-112	6"	1	176
600-113	8"	1	342
600-114	10"	1	551
600-115	12"	1	817

- Wrench operator
- Fire safe stem and body graphite seals
- Air tested seat leakage: 85 PSI
- Hydraulic tested body: 427 PSI
- Locking device comes standard
- 100% leak tested
- Wetted surfaces contain less than .25% lead content
- Raised face flange



FL-SS-100-300

2 Piece, Full Port, Flanged Connection, Class 300, Stainless

Part No.	Size	Carton	Weight
600-128	2"	1	28
600-130	3"	1	62
600-131	4"	1	106
600-132	6"	1	225

- Wrench operator
- Fire safe stem and body graphite seals
- Air tested seat leakage: 85 PSI
- Hydraulic tested body: 1124 PSI
- Locking device comes standard
- 100% leak tested
- Wetted surfaces contain less than .25% lead content
- Raised face flange



FL-CS-100-150

2 Piece, Full Port, Flanged Connection, Class 150, Stainless Steel Ball and Stem, Carbon Steel

Part No.	Size	Carton	Weight
600-203	1/2"	2	7
600-204	3/4"	2	9
600-205	1"	2	14
600-207	1-1/2"	2	28
600-208	2"	2	20
600-209	2-1/2"	1	28
600-210	3"	1	46
600-211	4"	1	74
600-212	6"	1	176
600-213	8"	1	342
600-214	10"	1	551
600-215	12"	1	817

- Wrench operator
- Fire safe stem and body graphite seals
- Air tested seat leakage: 85 PSI
- Hydraulic tested body: 427 PSI
- Locking device comes standard
- 100% leak tested
- Wetted surfaces contain less than .25% lead content
- Raised face flange



Thread Sealant

White Stuff

Slow-Drying Soft-Set PTFE Thread Sealant



Part No.	Size	Case	Weight
400-001	2 oz tube	72	11
400-002	4 oz can	24	13
400-003	8 oz can	24	20
400-004	16 oz can	12	22
400-005	32 oz can	12	39

Jomar's White Stuff is a slow drying, soft setting, non-hardening PTFE pipe thread compound. It will not transfer taste or odor to the system being sealed. Excellent for food and water systems. It is lead free, anti-galling, noncorrosive, nontoxic and will not harden in can.



Green Stuff

Slow-Drying Soft-Set General Purpose Thread Sealant



Part No.	Size	Case	Weight
400-101	2 oz tube	72	11
400-102	4 oz can	24	13
400-103	8 oz can	24	20
400-104	16 oz can	12	22
400-105	32 oz can	12	39

Jomar's Green Stuff is a slow drying, soft setting, non-hardening pipe thread compound. It will not transfer taste or odor to the system being sealed. Excellent for food and water systems. It is lead free, anti-galling, non-corrosive, nontoxic and will not harden in can.



Heavyweight

Slow-Drying Soft-Set Extra PTFE Thread Sealant



Part No.	Size	Case	Weight
400-202	4 oz can	24	13
400-203	8 oz can	24	20
400-204	16 oz can	12	22
400-205	32 oz can	12	39

Jomar's Heavyweight is a slow drying, soft setting, non-hardening industrial PTFE pipe thread compound. It will not transfer taste or odor to the system being sealed. Excellent for food and water systems. It is lead free, anti-galling, non-corrosive, nontoxic and will not harden in can.



Nickel Anti-Seize



Nickel Based High Temperature Anti-Seize Lubricant and Thread Sealant

Part No.	Size	Case	Weight
400-503	8 oz can	12	10
400-504	16 oz can	12	19

Jomar's Nickel Anti-Seize is a nickel based anti-seize lubricant and thread sealant. It produces a permanent leak-proof metallic seal under pressure, yet prevents seizing, galling, freezing, and tearing, even under extreme conditions. It is lead free, non-corrosive, nontoxic and will not harden in can.



Copper Anti-Seize



Copper Based High Temperature Anti-Seize Lubricant and Thread Sealant

Part No.	Size	Case	Weight
400-403	8 oz can	24	19
400-404	16 oz can	12	15

Jomar's Copper Anti-Seize is a copper based anti-seize lubricant and thread sealant. It produces a permanent leak-proof metallic seal under pressure, yet prevents seizing, galling, freezing, and tearing, even under extreme conditions. It is lead free, non-corrosive, nontoxic and will not harden in can.



WOG Plus

Fast-Drying Hard-Set Thread and Gasket Sealant



Part No.	Size	Case	Weight
400-302	4 oz can	24	12
400-303	8 oz can	24	21
400-304	16 oz can	12	19

Jomar's W.O.G Plus is a fast drying, hard setting, semipaste, thread and gasket sealer. It remains flexible, so vibrations will not loosen connection. W.O.G. Plus seals tightly but allows for disassembly without damage to parts. It is lead free, halogen free, non-corrosive and nontoxic.



Comparison Chart



WOG Plus



Heavyweight



Green Stuff



White Stuff



Copper Anti-Seize



Nickel Anti-Seize

	WOG Plus	Heavyweight	Green Stuff	White Stuff	Copper Anti-Seize	Nickel Anti-Seize
<i>JC Whitlam</i>	Steel-Unyte	Select-Unyte	T-U Type 555	Select-Unyte	Talon Copper	Talon Nickel
<i>Blue Monster</i>	-	Blue Monster PTRE Pipe Thread Sealant	Blue Monster Thread Sealant	Blue Monster PTRE Pipe Thread Sealant	Blue Mon- ster Copper Anti-Seize Lubricant	Blue Monster Nickel Anti-Seize
<i>Rectorseal</i>	Tru-Blu	T+2	#5, #5 Special, #5 Sub-Zero	T+2	Copper-Rich	Nickel-Rich
<i>Federal Process</i>	Gasolia Hard Set	Gasolia Soft-Set Thread Sealant PTFE	Gasolia-NT	Gasolia Soft-Set Thread Sealant PTFE	-	Gasolia Thred Gard
<i>Harvey</i>	-	TFE Paste	Yellow Sealant	TFE Paste	-	-
<i>Hercules</i>	Hercules Grrip	Real-Tuff	-	Real-Tuff	-	-
<i>Oatey</i>	-	Great White	Oatey Great Blue	Great White	-	-
<i>IPS</i>	-	White Seal	Green Stuff	White Seal	-	-

Uses Chart

Acetylene	Freon (All)	Natural Gas
Acids, Diluted	Gasoline*	Nitrogen, Gaseous
Air, Compressed	Gasohol	Oxygen
Alkalis Diluted	Glycol	Petroleum Solvents
Ammonia	Heating Oils	Propane
Aliphatic Solvents	Helium Gaseous	Refrigeration Gases
Brine	Hydraulic Oils	Soap, Liquid
Butane	Hydrogen	Steam Lines
Carbon Dioxide	Inert Gases, Gas- eous	Sugar, Liquid
Castor Oils	Jet Fuel (JP 3,4,5)	Vegetable Oils
Chlorinated Water	Kerosene	Water (Hot or Cold)
Corrosives	Lacquer	Xylol
Coal Tar Naphtha	Liquefied Petroleum Gases	
Cutting Oils	Manufactured Gases	
Diesel Fuel Oil	Mineral Oils	
Fatty Acids (Liquids)	Naphtha	

*Contact Jomar for compatible blends

LT-JV-PS V6 071025

Lift-N-Lock

Spring Loaded Tamper Proof Locking Device

Open & Closed	Closed Only	Size	Type	• Fits any T-100, S-100 or JP-100
210-994	210-994C	1/4", 3/8", 1/2"	1	
210-995	210-995C	3/4"	2	
210-996	210-996C	1", 1-1/4"	3	
210-997	210-997C	1-1/2", 2"	4	
210-998	210-998C	2-1/2", 3"	5	
	210-999C	4"	6	



Stem Extension

2" Stem Extension

Part No.	Size	Type	• Fits any T-100, S-100 or JP-100
230-004	1/4", 3/8", 1/2"	1	
230-005	3/4"	2	
230-006	1", 1-1/4"	3	
230-007	1-1/2", 2"	4	
230-008	2-1/2", 3"	5	



Memory Stop

Part No.	Size	Type	• Fits any T-100, S-100 or JP-100
220-103	1/4", 3/8", 1/2"	1	
220-104	3/4"	2	
220-105	1", 1-1/4"	3	
220-106	1-1/2", 2"	4	



Long Neck T-Handle

Part No.	Size	Type	• Fits any T-100, S-100 or JP-100
220-223	1/4", 3/8", 1/2"	1	
220-224	3/4"	2	
220-225	1", 1-1/4"	3	



Slo-Ball Handle

270° Gear Operator Handle

Part No.	Size	Type	• Fits any T-100, S-100 or JP-100
220-014	1/4", 3/8", 1/2"	1	
220-015	3/4"	2	
220-016	1", 1-1/4"	3	
220-017	1-1/2", 2"	4	



Stainless Steel Lever Handle and Nut

Part No.	Size	• Fits any T-100, S-100 or JP-100
220-299	1/8", 1/4" MINI	
220-300	1/4", 3/8", 1/2"	
220-301	3/4"	
220-302	1", 1-1/4"	
220-303	1-1/2", 2"	
220-305	2-1/2", 3"	
220-306	4"	



Geomet® Plated Steel Yellow Lever Handle

Part No.	Size	• Fits any T-100, S-100 or JP-100
899-701	1/4", 3/8", 1/2"	
899-704	3/4"	
899-705	1", 1-1/4"	
899-708	1-1/2", 2"	
899-710	2-1/2", 3"	
899-711	4"	



Stainless Steel Locking Handle

Part No.	Size	• Fits any T-100NE
220-994	1/4", 3/8", 1/2"	
220-995	3/4"	
220-996	1", 1-1/4"	
220-997	1-1/2", 2"	



Stainless Steel Round Handle

Part No.	Size	• Fits any T-100, S-100 or JP-100
220-501	1/4", 3/8", 1/2"	
220-504	3/4"	
220-505	1", 1-1/4"	
220-508	1-1/2", 2"	
220-510	2-1/2", 3"	
220-511	4"	



Red Aluminum T-Handle

Part No.	Size	Type	• Fits any T-100, S-100 or JP-100
220-204	1/4", 3/8", 1/2"	1	
220-205	3/4"	2	
220-206	1", 1-1/4"	3	



1-1/16" Square Head Top

Part No.	Size
899-113	1/2"
899-114	3/4"
899-115	1", 1-1/4"
899-117	1-1/2", 2"

• Fits any T-100, S-100 or JP-100



Locking Handle for T-SS-2002N-DUE

Part No.	Size
100-991LH	1/4"
100-992LH	3/8"
100-993LH	1/2"
100-994LH	3/4"
100-995LH	1"
100-996LH	1-1/4"
100-997LH	1-1/2", 2"

• Fits any T-SS-2002N-DUE



Pressure Temperature Port

Water Use Only (Nordel Core)	Gas Use Only (Neoprene Core)	Size
161-100	161-100NEO	1/8"
161-101	161-101NEO	1/4"



**For assistance or questions with any of our services please contact us:
(586) 268-1220 • email csr@jomar.com • live chat at www.jomarvalve.com**

Private Label

Send us your logo and we will customize your valve order! All certifications and warranties still apply to any product you private label. Minimum order is \$50.00 with a one time set-up fee and additional charge per valve. Extra fees may apply if your order is below the minimum.



Oxygen Cleaning

Jomar offers on-site ultrasonic cleaning of our products for use in medical oxygen services.

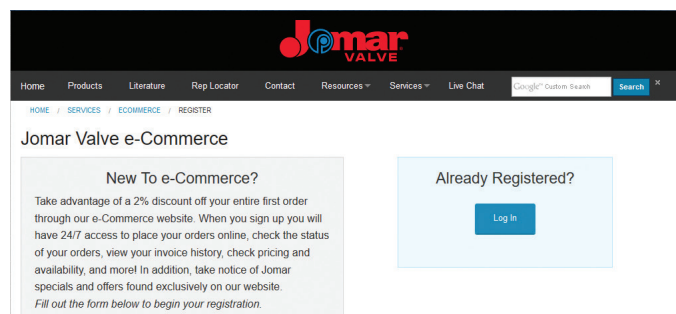
NFPA 99C states that materials for use in medical gas piping must be cleaned, plugged, capped and bagged until installed.

This process removes hydrocarbons (typically a grease or oil type substance) and other readily oxidizable materials using an ultrasonic cleaning device. Our oxygen cleaning process intends to remove all traces of contamination tightly adhered or embedded onto solid surfaces.



E-Commerce

Our e-Commerce website enables you 24/7 access to product pricing and availability. You can check on your order status or invoice history at any time along with the ability to place orders directly online. Special savings and deals are also available exclusively for ecom customers! Register online at www.jomarvalve.com/ecom.

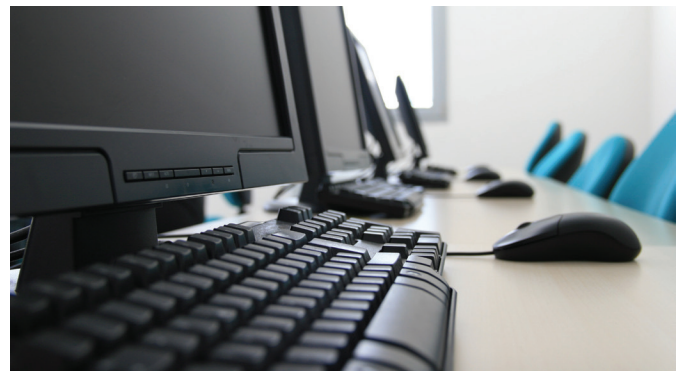


Electronic Data Interchange (EDI)

EDI allows customers to electronically transmit orders from their system and cuts down on the amount of time it takes to process orders. It reduces time waiting for acknowledgments, paying for costly errors and endless amounts of paper work and manual labor. EDI can fulfill your order quickly and offers the flexibility and functionality that your company deserves.

With Jomar EDI, you can transmit the following documents:

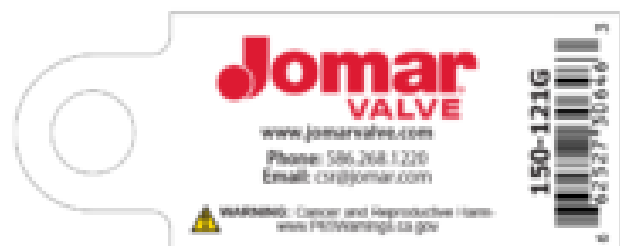
- 810 - Invoice
- 850 - Purchase Order
- 855 - Purchase Order Acknowledgment
- 856 - Advance Ship Notice



Proposition 65

The law requires California to publish a list of chemicals known to cause cancer or reproductive toxicity, and for businesses to provide warnings when they knowingly and intentionally cause significant exposures to listed chemicals. This list currently includes more than 850 chemicals. Proposition 65 does not ban or restrict the sale of chemicals on the list. The warnings are intended to help Californians make informed decisions about their exposures to these chemicals from the products they use and the places they go.

WARNING: This product can expose you to chemicals including lead, which is known to the State of California to cause cancer, and lead, which is known to the State of California to cause birth defects or other reproductive harm. For more information go to www.P65Warnings.ca.gov.



TERMS AND CONDITIONS OF SALE

UNLESS OTHERWISE SPECIFIED IN WRITING THE FOLLOWING WILL PREVAIL

GENERAL

The possession of the Jomar International catalog and/or literature is not to be construed as an offer to sell the goods listed herein. All orders shall be subject to the approval and acceptance of Jomar International, hereinafter referred to as the Company, at its principal office in Warren, Michigan.

All Company proposals, all acceptances of Purchaser's orders, and all sales by the Company are expressly limited to, and expressly made conditional upon, the Purchaser's acceptance and assent to the Standard Terms and Conditions of Sale as set forth herein, notwithstanding receipt of, or acknowledgment of, the Purchaser's order form or specifications containing additional or different provisions, or conflicting oral representations by any agent or employee of the Company. No waiver, change or modification of any terms or conditions on the face or reverse hereof shall be binding on the Company unless made in writing and signed by an officer of the Company.

PRICES AND TERMS

All prices are subject to change without notice. Minimum billing is \$50.00. Terms are 2% 10 days, NET 30 days subject to approved credit. Not applicable to credit card payments. Shipments can be expected, prior to establishing credit, by including check with order for full amount or specifying C.O.D.

Any order originating outside the contiguous United States, Alaska, Hawaii or Canada shall be subject to an irrevocable letter of Credit confirmed by a U.S. bank or a sight draft. 1-1/2% per month service charge on all balances unpaid by the 1st of the following month (18%) annual interest rate.

PERFORMANCE GUARANTEE

The Company guarantees to the original purchaser that the equipment of its manufacture will perform at rated capacity as stated only when (1) properly installed, connected, started, operated and maintained in accordance with Company Instruction(s), and or Information Guide(s), as revised from time to time, and (2) used for the applications specified and (3) used in the environments as specified or as limited. If equipment is part of a greater system, the Company accepts responsibility only for the equipment manufactured by it.

THIS EQUIPMENT MUST BE INSTALLED, OPERATED, AND MAINTAINED IN ACCORDANCE WITH THE APPROPRIATE INSTRUCTIONS(S) AND/OR INFORMATION GUIDE(S), AS REVISED FROM TIME TO TIME, PURCHASERS OF THE COMPANY'S EQUIPMENT WAIVE SUBROGATION ON ALL ITEMS COVERED UNDER THEIR OWN OR OTHER INSURANCE.

LIMITED WARRANTY ON THE EQUIPMENT ITSELF

The Company, for a period of one year from the date of shipment, warrants each product or system of its own manufacture to the original purchaser to be free from defects in material and workmanship under normal use, service and maintenance. Normal use, service and maintenance means:

- Not in excess of the maximum pressures, temperatures, volumes and rated capacities or other parameters specified in the Company's Product Bulletins, Specification Sheets, and/or quotation(s).
- Using only fluids specified in the Company's Product Bulletins, Specification Sheets, and/or quotations.
- Operation and maintenance in compliance with the appropriate instructions and/or Information Guides.

FREIGHT ALLOWANCE

All prices are FOB Warren, Michigan with full freight prepaid and allowed within the contiguous United States on shipments of \$1,500.00 net or more excluding ductile/cast iron, stainless steel and carbon steel products which are \$2,500.00 or more. Any combination of products, items or sizes may be combined to satisfy the dollar amount required to earn full freight allowance. The Company reserves the right to select the most economical routing and shall not be liable by reason of the mode or route of shipment nor held responsible for any assessorial charges beyond the standard freight and fuel charges such as lift-gate, redelivery, re-consignment, residential, litigate surcharges, etc.

EXPORT SHIPMENTS

All prices are FOB plant, Warren, Michigan, with full freight prepaid and allowed to Port of Exit on shipments of \$1,500.00 net or more.

PACKAGING

All list prices are based on domestic packaging. For export packaging, contact the factory for pricing.

DELIVERY

The quoted time of delivery is understood to be from date of receipt of all necessary information including Purchaser's approval, if applicable. Any delay in delivery of any installment shall not relieve purchaser of its obligation to accept remaining deliveries. The Company shall not be liable for damages or for cancellation of the contract as a result of any delay due to any cause beyond the Company's reasonable control including, but not limited to, act of God, act of the purchaser, embargo or other governmental acts, regulations or requirements, fire accident, labor disputes, war, civil insurrection or riot, delay in transportation or the inability to obtain necessary labor, materials or manufacturing facilities. In the event of any such delay the date of delivery shall be extended for a period equal to the time lost by reason of the delay. All shipments, unless otherwise specified, shall be FOB shipping point and the purchaser assumes responsibility for damage or loss in transit. The Company shall not be liable or responsible by reason of the mode or route of shipment.

Products or goods not of Company manufacture supplied in piece, or as components to a system designed or sold by the Company, are not covered by this warranty. However, the Company will extend to the purchaser the benefit of such adjustment as is obtained from the manufacturer of that component or product. This warranty does not apply to damage caused by any or all of the following circumstances or conditions:

- Freight damage.
- Parts and/or accessories or components not obtained from or approved by the Company.
- Any consequential or incidental damage arising from the use of the product, system or other goods manufactured or sold by the Company.
- Misapplication, misuse, abuse, or failure to follow the Product Instruction Sheets and/or Information Guides

The remedy under this warranty is limited to the repair or replacement of any parts found upon examination by the Company to have been defective, and shall not include removal and reinstallation costs involved in the exchange. The remedy shall be conditioned upon receipt of written notice by the Company of any alleged defects promptly after discovery thereof within the warranty period. Generally, consent, if given, will be upon the condition that the purchaser assumes and prepaids all carrier charges.

THIS WARRANTY IS EXCLUSIVE. THE COMPANY EXPRESSLY DISCLAIMS ANY AND ALL OTHER WARRANTIES, WHETHER EXPRESSED OR IMPLIED, INCLUDING ANY IMPLIED WARRANTY OR MERCHANT ABILITY OF FITNESS FOR A PARTICULAR PURPOSE OR, ANY PURPOSE.

No person, including any dealer or representative of the Company, is authorized to make any representations concerning the Company products or systems on behalf of the Company or to assume for the Company the obligations contained in this warranty. The Company reserves the right to make design and other changes, modifications or improvements upon its products or systems, without any obligation to install same on any previously sold or delivered products or systems. This warranty gives the purchaser specific legal rights. The purchaser may have other rights that vary from state to state.

LIMITATION OF LIABILITY

It is expressly agreed that the liability is limited and the Company does not function as an insurer. The purchaser and/or user agree that the Company is not liable for loss, harm or damage due directly or indirectly to any occurrence of consequence therefrom. If the Company should be found liable to anyone in any theory (except any express warranty where the remedy is set forth in this document) for loss, harm, or damage, the liability of the Company shall be limited to the lesser of the actual loss, harm or damage, or the original purchase price of the involved equipment, system or service when sold (or when services performed by) the Company to its customer. This liability is exclusive and regardless of cause or origin resulting directly or indirectly to person or property from:

- The performance or non-performance of any obligation set forth in this warranty and warranty policy.
- Any agreement, oral or written, including specifications, between the Company and the customer.
- Negligence, active, passive or otherwise, of the Company or any of its agents, employees, or independent contractors.
- Breach of any judicially imposed warranty or covenant and,
- Misrepresentation or strict liability involvement.

SPECIAL PRODUCTS

Special products produced to order, or products not normally stocked, are subject to a 10% overrun or underrun. Pattern equipment, tooling, etc., built for the manufacture of purchaser's products shall at all times remain in the possession of the Company. Since such equipment is made or supplied on a non-profit basis, it shall not be removed from the Company's plant except upon payment of a minimum 20% charge: based on the original equipment costs to cover engineering, drafting, and handling. The Company agrees to maintain such equipment except the major repairs or replacement would be at the purchaser's expense. If no orders have been received for production for a period of eighteen months, the Company accepts no liability for the continued existence or availability of such equipment after such period. Written notification advising the customer of the expiration date will not be required of the Company.

BUYER'S PURCHASE ORDER TERMS

The terms on the purchase order shall not change, enlarge, or modify Company's liability or obligations.

SHORTAGE AND BREAKAGE

The Company's responsibility for delivery of materials sold FOB shipping point ends when the receipt is obtained from the consignor of the transportation company. It is agreed that the purchaser shall notify the Company of any shortage within five (5) days from receipt of the material. In the event of loss or damage incurred in transit, the carrier shall be responsible and claims for parts broken or lost in shipment are to be filed with the transportation company by the company.

CANCELLATION OF ORDERS

If, for any reason, the purchaser desires to cancel an order, such cancellation shall only be with written consent of the Company, and then only after payment is made to the Company for all costs incurred which shall include but not be limited to, material, labor, overhead, and reasonable profit.

RETURNS AND RESTOCKING CHARGES

Equipment may be returned to Jomar International at 7243 Miller Drive, Warren, Michigan 48092, only upon prior written authorization of the Company. Consent, if given, will be upon the condition the purchaser assumes all carrier charges responsibility for damages in transit, and a minimum 15% restocking charge, and then only if the so authorized material is in new and unused condition and returned within one year from the original date of shipment. The credit will be based on the original invoice price or the current price, whichever is lower, less the applicable restocking charge.

SERVICE

Unless otherwise noted herein, the cost of the equipment does not include service or installation. All services performed by the Company are subject to purchaser's payment of the Company's prevailing charges plus necessary travel and living expense.

TAXES

Any tax or taxes that may be imposed upon the goods that are the subject of this sale, or upon the sale or delivery, shall be added to and become a part of the contract price.

REGULATIONS

Every contract of sale shall be subject to all applicable state and federal statutes and regulations.

The terms of this agreement shall be construed in accordance with the laws of the state of Michigan.



7243 Miller Drive , Warren, MI 48092
phone: (586) 268-1220 • fax: (586) 979-8315 • email: csr@jomar.com
www.jomarvalve.com