

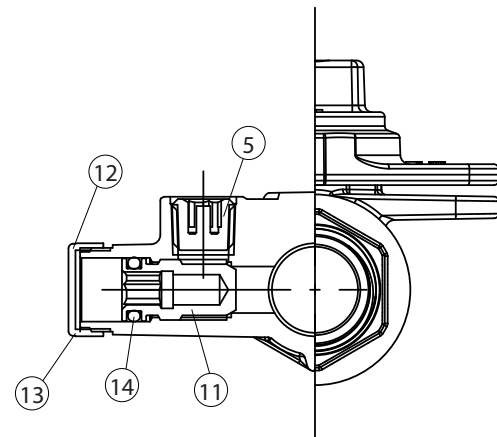
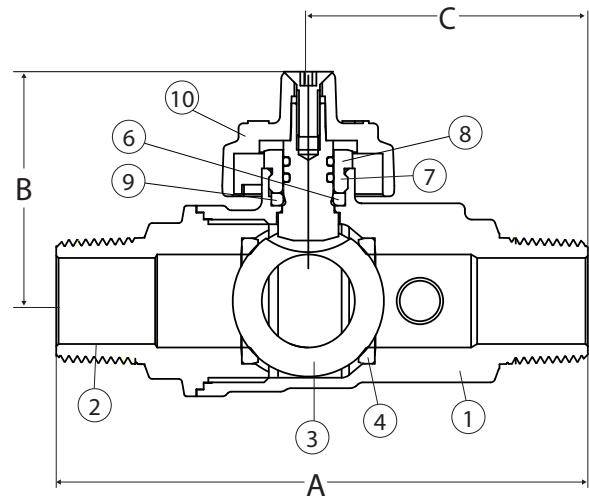
Lockwing



Utility Gas Ball Valve, Full Port, Service Bypass, MIP x MIP Connection, 175 PSIG



175-LWMBP



Features

- Tamper Resistant Lockwing Cap
- 2 FKM O-Rings
- Full Port Design to Accommodate Industry Leading Stop Changers
- Lockwing Accommodates Standard Barrel Locks
- Maintenance Free Design
- Patented Security Shutter and Lockwing Tab - US Patent No. 6,648,009
- 100% Leak Tested
- 100% Made in Italy
- Leakproof Stem - Lifetime Warranty

Approvals

- CSA Certified
 - CGA 3.16 (175SG)
 - ANSI B16.33 (175G)
- Meets or exceeds applicable part of DOT 192 and ANSI B16.33
- MSS SP-110

Pressure Rating

- 175 PSIG
- Temp range: -20°F to 300°F

Material Specifications

No.	Part	Materials
1	Body	Chrome Plated Brass - C37700
2	End Connection	Chrome Plated Brass - C37700
3	Ball	Chrome Plated Brass - C37700
4	Seat (2)	PTFE G300
5	Set Screw	Brass - C38500
6	Stem	Brass - C38500
7	Stem O-ring (2)	FKM
8	Packing Gland	Brass - C38500
9	Packing	NBR
10	Lockable Cap	Brass - C37700
11	Shutter	Brass - C38500
12	Washer	Vulkan Fiber
13	Cap	Brass - C38500
14	Screw	304 Stainless Steel
14	Bypass Cap	Brass - C38500

Dimensions

Part No.	Size	A	B	C	D
243-204B	3/4"	4.50	1.94	1.55	0.75

