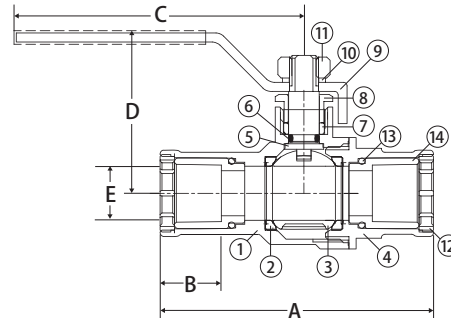


## Lead Free Brass Ball Valve

CPVC, 2 Piece, Full Port, Solvent Connection, 150 WOG

**S-155G**



### FEATURES

- Dezincification Resistant Brass Alloy
- CTS Connection
- IAPMO Certified - NSF 61 & NSF 372
- ASTM D2846
- For Hot/Cold Water Systems
- Quarter-Turn Operation
- CPVC End Connection Inserts

### CERTIFICATIONS/APPROVALS

- IAPMO Certified
  - NSF/ANSI/CAN 61-8 2018
  - NSF/ANSI 372-2016
  - NSF/ANSI 14-2016 (Pending Testing)

### PRESSURE/TEMPERATURE RATING

150 PSI at 73°F Continuous  
Temp range: 33°F to 180°F

### MATERIALS

No.	Part	Material
1	Body	Lead Free Brass - C46500
2	Seat	TFM 1700
3	Ball	Chrome Plated LF Brass - C46500
4	End Connection	Lead Free Brass - C46500
5	Stem	Brass
6	O-Ring	FPM
7	Packing	TFM 1700
8	Packing Nut	Brass
9	Handle	Steel
10	Lock Washer	Stainless Steel
11	Nut	304 Stainless Steel
12	Plug Cap	Lead Free Brass - C46500
13	O-Ring	EPDM
14	Connector	CPVC

### DIMENSIONS

Part No	Size	A	B	C	D	E
150-603G	1/2"	2.93	0.67	3.68	1.98	0.59
150-604G	3/4"	3.56	0.87	4.04	2.14	0.79
150-605G	1"	4.31	1.06	4.14	2.39	0.98
150-606G	1-1/4"	5.55	1.38	5.00	2.54	1.26
150-607G	1-1/2"	6.61	1.58	6.18	3.02	1.57
150-608G	2"	7.58	1.98	6.18	3.34	1.97



WARNING: This product can expose you to chemicals including lead, which is known to the State of California to cause cancer, birth defects or other reproductive harm.  
For more information go to [www.P65Warnings.ca.gov](http://www.P65Warnings.ca.gov).